

Pilots and use cases

Olav Peeters
VMM (IRCEL - CELINE)

Workshop INSPIRE-conference 24-06-2013

IS

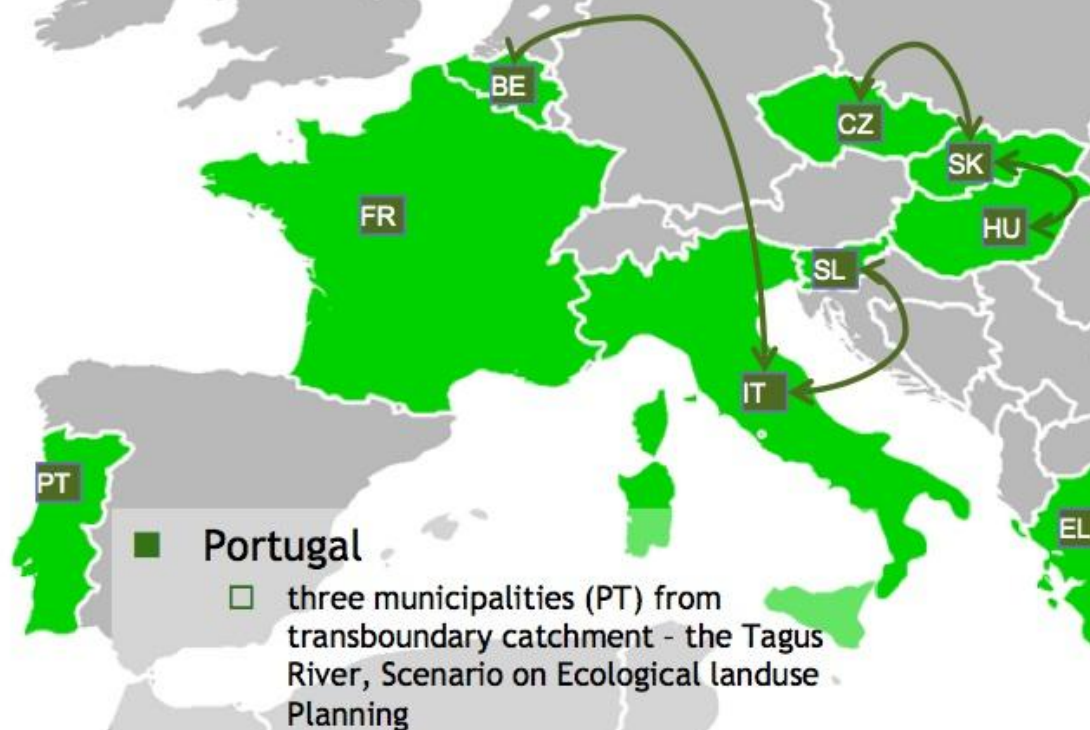
Scenarios & Pilots

3 Cross-border Pilots:

- ☐ Czech Republic/Slovakia for everyday life issues connected to Environmental aspects
- ☐ Hungary/Slovakia for Nature Conservation
- ☐ Italy/Slovenia for Environmental Risk (Geohazard)

1 Scenario in two Pilots

- ☐ Belgium and Italy for Air Quality



Overview - eENVplus use case definition and user requirements collection

- A number of use cases were defined for each of the Pilot Applications (*overall 26 use-cases already defined*)
- A Technical Team was established to analyze the provided use cases and extract user and system requirements.
- These requirements (more than 130) are the basis for the specifications of the eENVplus software products.
- A collaborative software environment (bug tracker and project management tool) has supported the requirements collection phase.
- A strong communication effort between all partners has been of great importance.

Step 1

- collection

Use Case descriptions

10 Pilot Applications

26 Use Cases where defined

EP01 - Pilot in Belgium:

Scenario: Implementation of a SEIS for air quality data

- UC-EP01-01: The reporting service
- UC-EP01-02: Validation and official submission
- UC-EP01-03: Providing useful open services derived from the same data

EP02 - Pilot in Italy:

Scenario: Implementation of a SEIS for air quality data

- UC-EP02-01: National collection of reporting data
- UC-EP02-02: Official submission of National Reporting

EP03 - Pilot in Belgium:

Scenario: Providing INSPIRE-compliant access to utility services: the case of sewage networks in Flanders

- UC-EP03-01: Consulting the sewage database for the expansion and maintenance of the sewage system and wastewater treatment infrastructure
- UC-EP03-02: Joint management tool for the sewage database
- UC-EP03-03: Dissemination of information on sewage system to all stakeholders

EP04 - Cross-border Pilot in Czech R. / Slovakia

Scenario: CSpire - Everyday Life Issues Connected to Environmental Aspects

- UC-EP04-01: I want to cut a tree down on land which is under my ownership (outside of the forest)
- UC-EP04-02: I want to use water from underground sources in a quantity greater than 500 qm/day (build a well and draw water)
- UC-EP04-03: I am seeking a quiet and clean place to build a cottage

EP05 - Pilot in France:

Scenario: Natural Areas INSPIRE Compliance Toolbox

- UC-EP05-01: Determine if the user is in or near a Protected site / a Biogeographical Region or an Habitat / Biotope zone
- UC-EP05-02: I've seen a species – Is there other around me?

EP06 - Pilot in Greece:

Scenario: Forest Fire Management

- UC-EP06-01: Awareness Phase, data acquisition, pre-processing and preparation
- UC-EP06-02: Emergency Phase

EP07 - Cross-border Pilot in Hungary / Slovakia

Scenario: Window on the Protected Areas - Mobile Conservation Map

- UC-EP07-01: Mobile Conservation Map (MCM) application

EP08 - Pilot in Iceland:

Scenario: INSPIRE Geoportal

- UC-EP08-01: Discover and Viewing, INSPIRE compliant services for nature conservation purpose

EP09 - Cross-border Pilot in Italy / Slovenia

Scenario: Geological Map Harmonization

- UC-EP09-01: Environmental risk (geo-hazard): landslide susceptibility map
- UC-EP09-02: Environmental risk (geohazard): analysis of flooding phenomena
- UC-EP09-03: Environmental analysis: geological and environmental features of karst area

EP10 - Pilot in Portugal

Scenario: Urban Landuse Planning

- UC-EP10-01: Delineation of study areas
- UC-EP10-02: Evaluate urban and rural growth
- UC-EP10-03: Evaluate and document data accuracy
- UC-EP10-04: Evaluate spatial planning impact on urban growth
- UC-EP10-05: Evaluate the impact of urban growth on air and water quality
- UC-EP10-06: Integrate statistical data (time series)

- Matrix mapping Use Cases to functionalities

									Services												User Requirements (Issue)																																																			
Pilot Number	Scenario Title	Pilot Responsible	Technical Responsible (Proposal)	Data Themes	Harmonisation Toolkit	Validation Toolkit	eENVIria Catalogue and connection	Mobile App	Thesaurus Exploitation Services			Data Access Services				Web Processing Service (WPS)	Orchestration Service	Reporting Service	Crowdsourcing Service	Validation Service	Ingestion Service and Work Flow	Advanced (JDIAR) Visualisation Support Service	Other Functional requirements	Nonfunctional (Issue Category)																																																
									TF for Metadata Compilation	TF for Data Discovery	TF for Semantic Explorative Search	Web Map Service (WMS)	Web Feature Service (WFS)	Web Coverage Service (WCS)	Catalogue Service for Web (CSW)									Sensor Observation Service (SOS)	User Interface	Usability	Performance	Operational	Security	Legal																																										
EP01	Implementation of a SEIS for air quality data	Oliv Peeters (VMM-IRCELIN)	Oliv Peeters (VMM-IRCELIN), Carmelo Attardo (GISIG), EPSIT	III.11.AM, III.7. EF, III.13 AC	EP01-01	EP01-02	EP01-03	EP01-03	EP01-03	EP01-03	EP01-03	All EP01-03	All EP01-03			All		EP01-01 EP01-02		All	All	EP01-03	EP01-03 (n)	EP01-02 EP01-03		EP01-03		EP01-02	EP01-03																																											
EP02	Implementation of a SEIS for air quality data	Gianini Luciana (ISPRA)	Gianini Luciana (ISPRA), Carmelo Attardo (GISIG), EPSIT	11. AM	All	All			EP02-01				All	All			All	EP02-01 EP02-02	All		All		EP2-02 (2)	see redmine > require ments																																																
EP03	Providing INSPIRE-compliant access to utility services: the case of sewage networks in Flanders	Katleen Miserez (VMM) Kristof Deconne (VMM)	Katleen Miserez (VMM), Roderic Molina (GISIG)	I.8. HY, III.6. US	All (n)	All (n)	All					All	All		All			EP03-03	All	All		see redmine requirements				All	All																																													
EP04	Caspira - Everyday Life Issues Connected to Environmental Aspects	Jarmila Cikankova (CENIA), Marek Ziacki (SAZP), Veronika Koskova (SAZP)	Marketa Hanzlova (GISIG)	I.6 CP, I.8 HY, I.9 PS, II.2 LC, III.5 HH, III.8 PF, III.4 LU (SK), III.6 US (SK), III.17-19 (SK)	All	All	Maybe					All	All		All		All EP04-01 EP04-02 EP04-03		All		All (n)				All																																															
EP05	Natural Areas INSPIRE Compliance Toolbox	Sophie Gras (ATEN)	Stefano Piffer (Graphitech), Marketa Hanzlova (GISIG)	I.9 PS, III.17 BR, III.18 HB, III.19 SD	All	All	All	All	All	All	All	All	All	All				EP05-02		All		All	All			EP05-03	All																																													
EP06	Forest Fire Management	Marc Bonazountas, Alkis Astyrikopoulos (EPSILON)	Giacomo Maritano (EPSIT)	II.2- LC, III.7. EF, III.14: MF	EP06-02	X			All			All	All			All	All			EP06-01(n) EP06-02		All																																																		
EP07	Window on the Protected Areas - Mobile Conservation Map	Attila Andras Takacs (MRD), Bela Markus (GEO), Marek Ziacki, Veronika Koskova, Martin Koska (SAZP)	Stefano Piffer (Graphitech)	I.9. PA , I.8. HY	EP07-01	EP07-01		EP07-01		EP07-01	EP07-02	EP07-01	EP07-00	EP07-01				EP07-01			EP07-01		EP07-01	EP07-01			EP07-01	EP07-01																																												
EP08	INSPIRE Geoportal - Nature conservation data in Iceland	Eydís Lindal Finnbogadóttir (NLSI)	Jens Stutte (PKH), Dimitrios Karachalios (PKH)	I.1.RS, I.4.AU, I.9.PS, I.7.TN	EP08-01	EP08-01	EP08-01 (n)		EP08-01	EP08-01	EP08-01	EP08-01	EP08-01	EP08-01 (n)								EP08-01 (n)					EP08-01																																													
EP09	Geological Map Harmonization	Marco Pantaloni (ISPRA), Mateusz Novak (GeoZS)	Carlo Cipollini (ISPRA), Stefano Pazzi (SINIRGIS), Stefano Piffer (Graphitech)	II.4 GE, II.1 EL (IT), I.7. TN (IT), III.12. NZ, I.8. HY (SI)	All	All	All		All	Pazzi	All	All		All	EP09-03	All EP09-01 EP09-02 EP09-03		All	EP09-01 EP09-02	EP09-01 EP09-02	EP09-01 EP09-02	EP09-01 EP09-02	All	All	EP09-01	EP09-01	All																																													
EP10	Urban Landuse Planning: INSPIRE'd land use planning Indicators to monitor good urban planning practices	Rui Reis, Maria Vale (DGT), Raquel Saraiva (DGT)	Rui Reis & Maria Vale (DGT), Roderic Molina (GISIG)	I.4. AU, II.3. OI, III.1. SU, III.4. LU	All	All			All			All	All			All EP010- (01, 02, 03, 04, 05)		All	EP010- (01, 02, 03, 04, 05)		All (n)		All	All																																																
				Responsibilities (As signed)	WP3, Giacomo Maritano (EPSIT) SNERGIS				TS.7 Jens Stutte + XXX (PKH)				Stefano Piffer (GRAPHITECH)				WP4, Marco Cullarino (GVR-MAT), Carmelo Attardo (day)				TS.3, Stefano Piffer (GRAPHITECH)				TS.4, Corrado Heidmann (day) Stefano Pazzi (SNERGIS)				TS.5 (GISIG, VMM, ISPRA)				TS.6, Stefano Piffer (GRAPHITECH)				TS.3, Giacomo Maritano (EPSIT)				TS.3, Stefano Pazzi (SNERGIS)				WPS Olga, Stefano Piffer (GRAPHITECH)				Technical Responsible				Technical Responsible				Technical Responsible				Technical Responsible				Stefano Pazzi (SNERGIS)				Technical Responsible			

- entering requirements in a tracking system

Home My page Projects Administration Help

Logged in as radmin My account Sign out

eENVplus

Overview Activity Roadmap Issues New issue Gantt Calendar News Documents Wiki Files Arch Issues Summary

Requirements #103

Update Log time Unwatch Copy Delete

WPS service for relevant data identification and retrieval « Previous | 5 of 12 | Next »

Added by Luca Giovannini 9 days ago. Updated about 2 hours ago.

Status:	New	Start date:	June 12, 2013
Priority:	Normal	Due date:	
Assignee:	Stefano Pezzi	% Done:	0%
Category:	Functional Requirement	Spent time:	-
Target version:	Version 1	Pilot:	EP10 (PT)
Scenario:	Urban Landuse Planning: INSPIRE'd land use planning Indicators to monitor good urban planning practices		
Services (If Functional Req.):	Web Processing Service (WPS)	Validated TR:	Yes
Non-functional Requirements:		Validated SR:	No
Use Case ID:	UC-EP10-01	Validated PR:	No

Description Quote

eENVplus system shall provide a WPS service to identify and retrieve the data relevant to the user-provided area of interest among the available statistical datasets on urban planning and growth urban planning.

If what we want is to select an AoI we don't need a WPS.

Related Arch Decisions Add

Subtasks Add

Related issues Add

Related to Requirements #81: Definition of the area of interest New June 11, 2013

History

Updated by Stefano Pezzi 8 days ago #1

- Subject changed from WPS service for relevant data identification and retrieval to WPS service for relevant data identification and retrieval

Updated by Stefano Pezzi 8 days ago #2

- Description updated (diff)

Updated by Roderic Molina about 2 hours ago #3

- Description updated (diff)
- Scenario changed from Urban Landuse Planning to Urban Landuse Planning: INSPIRE'd land use planning Indicators to monitor good urban planning practices
- Validated TR set to Yes
- Validated SR set to No
- Validated PR set to No

Update Log time Unwatch Copy Delete

Also available in: Atom | PDF

Issues

View all issues
Summary
Calendar
Gantt

Watchers (5) Add

- Luca Giovannini
- Maria Vale
- Roderic Molina
- Rui Reis
- Stefano Pezzi

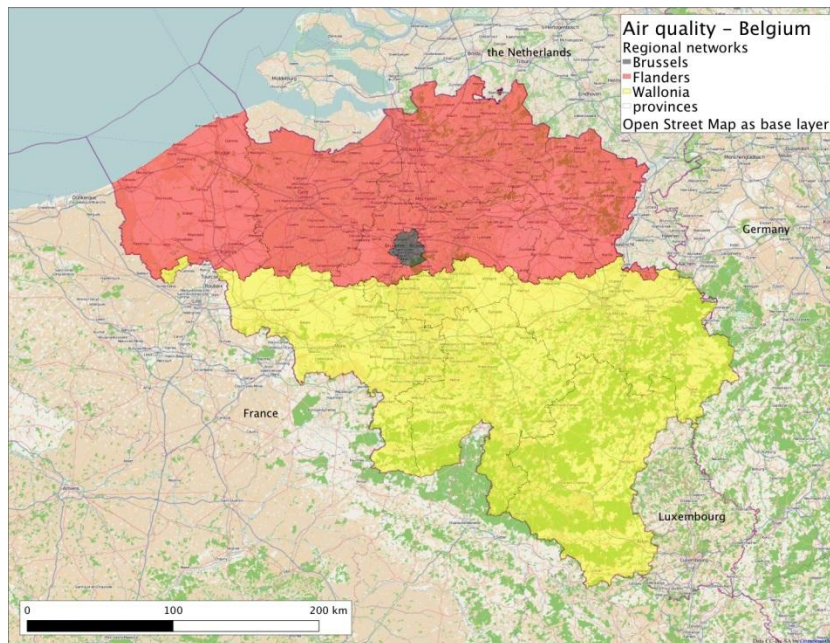
... more than 130 requirements where defined

eENVplus user & system requirements are tracked in a shared system stimulating & structuring communication between partners

Redmine (<http://www.redmine.org/>) project management and bug-tracking tool
GNU General Public License v2 (GPL)

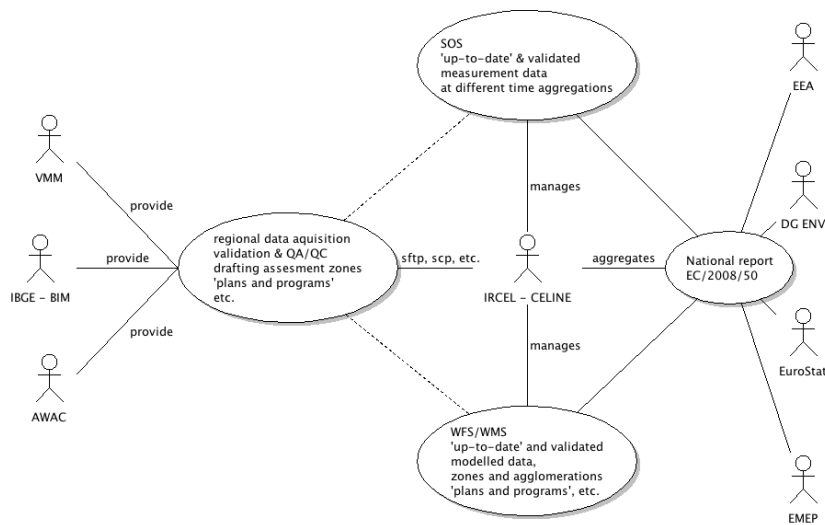
EP01 - Pilot in Belgium: Scenario: Implementation of a SEIS for air quality data

- UC-EP01-01: The reporting service
- UC-EP01-02: Validation and official submission
- UC-EP01-03: Providing useful open services derived from the same data

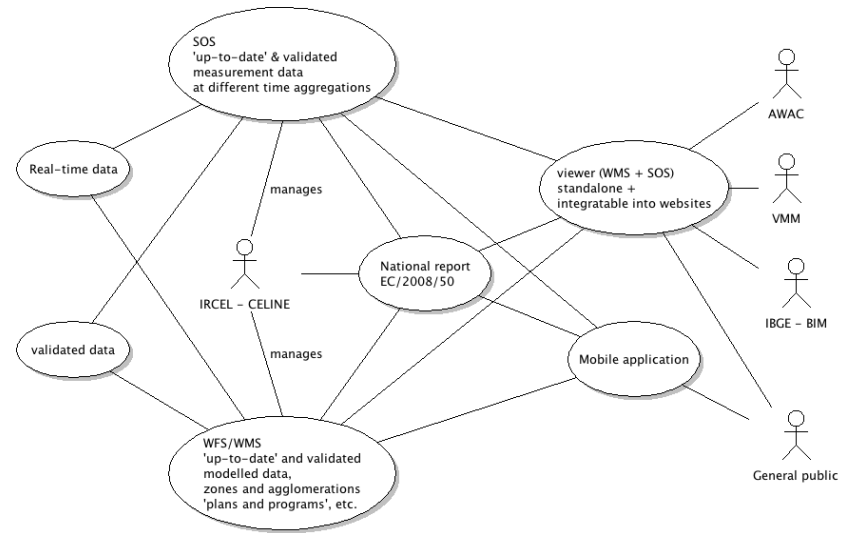


Datasets in BE

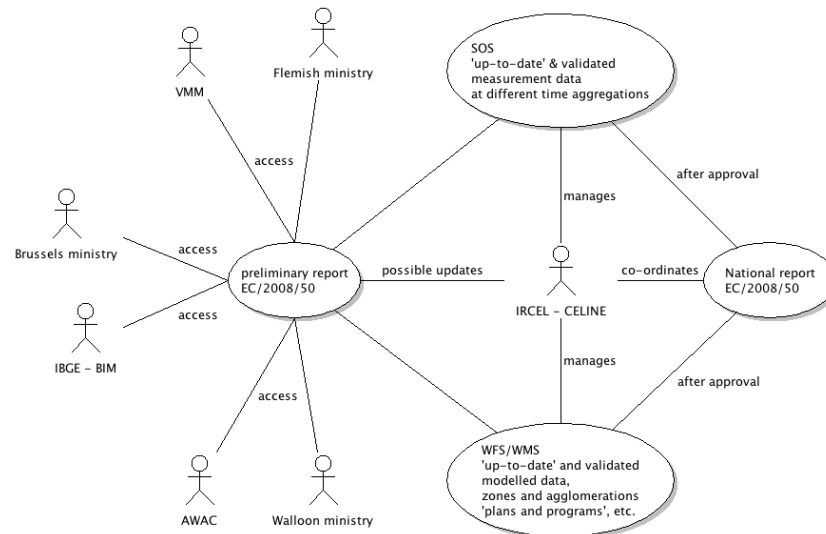
INSPIRE DT	Content	Metadata	IPR / Open Data
III.11.AM	Dataset B – "zones and agglomerations"	ISO 19115	Open data
III.11.AM	Dataset C – "assessment regime"	ISO 19115	Open data
III.11.AM	Dataset D – "assessment methods"	ISO 19115	Open data
III.7. EF	Dataset E1a – "primary validated assessment data – measurements"	ISO 19115	Open data
III.13 AC	Dataset E1b – "primary validated assessment data – modelled"	ISO 19115	Open data
III.7. EF	Dataset E2a – "primary up-to-date assessment data – measurements"	ISO 19115	Open data
III.13 AC	Dataset E2b – "primary up-to-date assessment data – modelled"	ISO 19115	Open data
III.7. EF	Dataset F1a – "aggregated data - primary validated measurements"	ISO 19115	Open data
III.13 AC	Dataset F1b – "aggregated data - primary validated modelled"	ISO 19115	Open data
III.7. EF	Dataset F2 – "aggregated data - primary up-to-date measurements"	ISO 19115	Open data
III.11.AM	Dataset G – "attainment of environmental objectives"	ISO 19115	Open data
III.11.AM	Dataset H – "air quality plans"	ISO 19115	Open data
III.11.AM	Dataset I – "source apportionment"	ISO 19115	Open data
III.11.AM	Dataset J – "scenario for the attainment year"	ISO 19115	Open data
III.11.AM	Dataset K – "measures"	ISO 19115	Open data



UC-EP01-01 - The reporting service



UC-EP01-02 - Validation and official submission



UC-EP01-03 - Providing useful open services derived from the same data

Example of requirements:

✓ # ▼	Pilot	Scenario	Use Case ID	Assignee	Subject
<input type="checkbox"/> 109	EP01 (BE)	Implementation of a SEIS for air quality data	UC-EP01-01, UC-EP01-02, UC-EP01-03	Stefano Pezzi	Ingestion Service for air quality data
<input type="checkbox"/> 91	EP01 (BE)	Implementation of SEIS for air quality data (BE)	UC-EP01-03		Integrate View Service with INSPIRE (DRAFT)
<input type="checkbox"/> 90	EP01 (BE)	Implementation of SEIS for air quality data (BE)	UC-EP01-03		Integrate Download Service with INSPIRE (DRAFT)
<input type="checkbox"/> 60	EP01 (BE)	Reporting Service	UC-EP01-01 UC-EP01-02 UC-EP01-03	Stefano Piffer	SOS support for browser-based mapping client
<input type="checkbox"/> 58	EP01 (BE)	Implementation of a SEIS for air quality data	UC-EP01-03	Stefano Piffer	Advanced Visualization in Web Client
<input type="checkbox"/> 54	EP01 (BE)	Reporting Service	UC-EP01-03	Stefano Piffer	Mobile app for Air quality dataset
<input type="checkbox"/> 36	EP01 (BE)	Reporting Service	UC-EP01-01 UC-EP01-02 UC-EP01-03	Stefano Piffer	WFS support for web-based mapping client
<input type="checkbox"/> 35	EP01 (BE)	Reporting Service	UC-EP01-01 UC-EP01-02 UC-EP01-03	Stefano Piffer	WMS support for web-based mapping client
<input type="checkbox"/> 17	EP01 (BE)	Implementation of SEIS for air quality data	UC-EP01-03		Semantic Explorative Search
<input type="checkbox"/> 16	EP01 (BE)	Implementation of SEIS for air quality data	UC-EP01-03		Service Discovery
<input type="checkbox"/> 15	EP01 (BE)	Implementation of SEIS for air quality data	UC-EP01-01 UC-EP01-02		Metadata Compilation for time-aggregated datasets

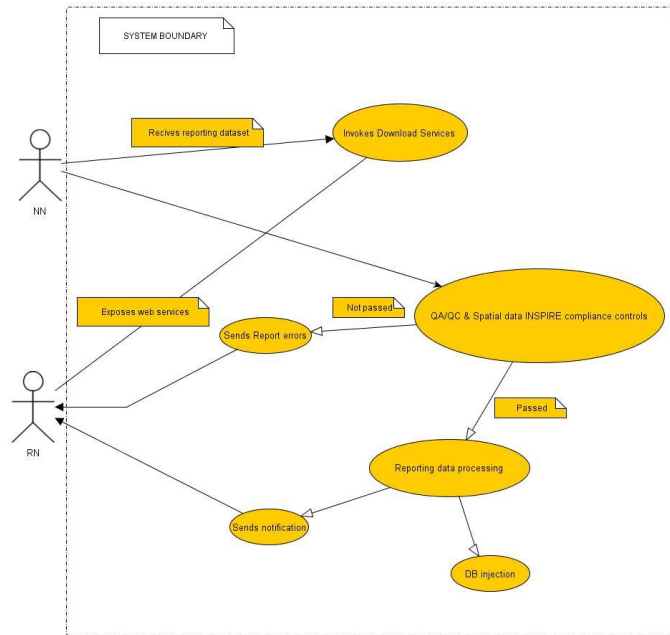
EP02 - Pilot in Italy: Scenario: Implementation of a SEIS for air quality data

- UC-EP02-01: National collection of reporting data
- UC-EP02-02: Official submission of National Reporting

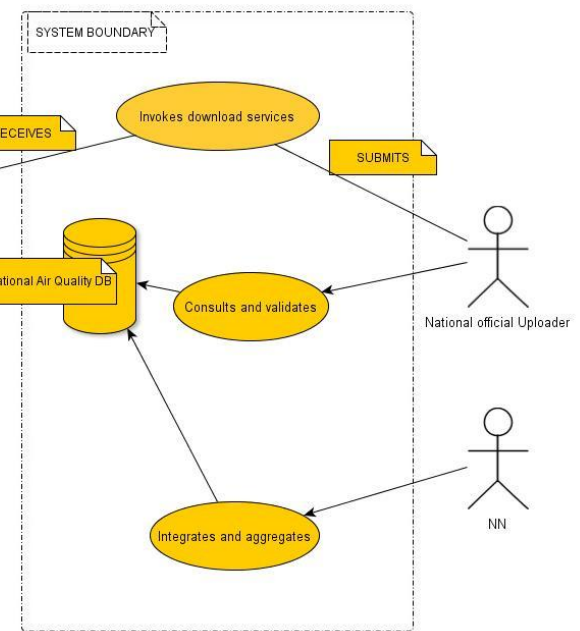
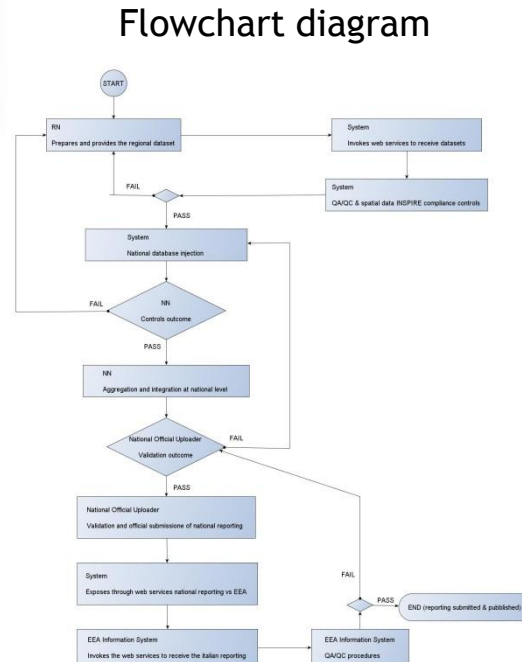


Datasets in IT

INSPIRE DT	Content	Metadata	IPR / Open Data
11. AM	Air Quality Zone and Agglomerations Information	ISO19115/INSPIRE	Free under specific agreement (IPR mention), data available for eENVPlus use



UC-EP02-01 - National collection of reporting data



UC-EP02-02 - Official submission of National Reporting

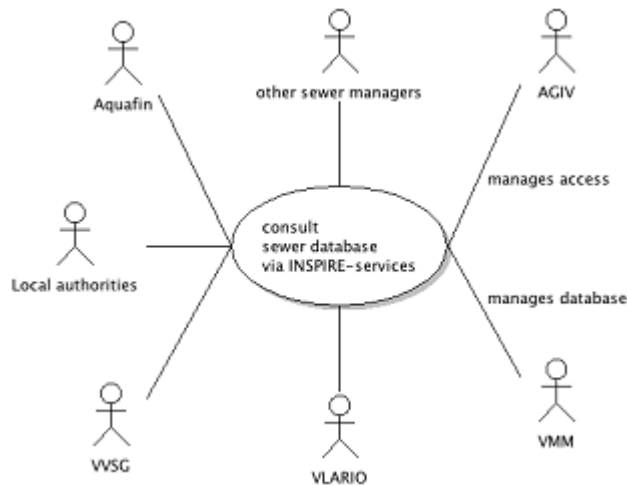
EP03 - Pilot in Belgium:

Scenario: Providing INSPIRE-compliant access to utility services: the case of sewage networks in Flanders

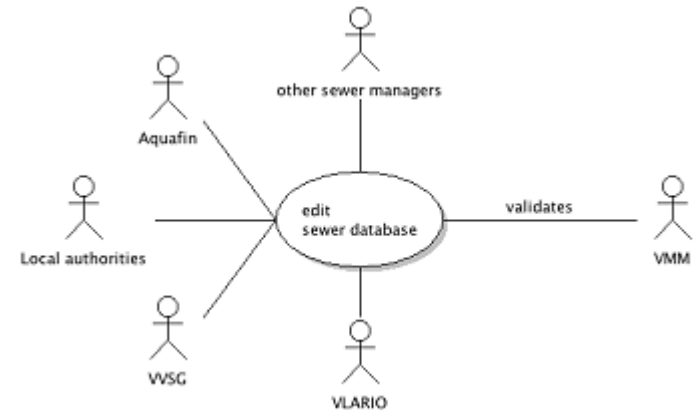
- UC-EP03-01: Consulting the sewage database for the expansion and maintenance of the sewage system and wastewater treatment infrastructure
- UC-EP03-02: Joint management tool for the sewage database
- UC-EP03-03: Dissemination of information on sewage system to all stakeholders

Datasets in BE

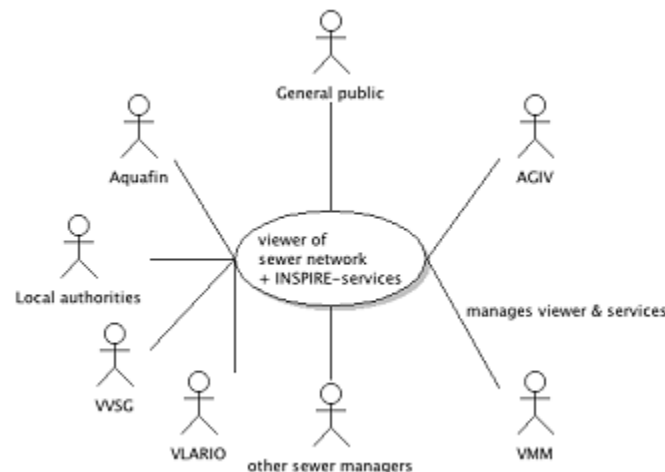
INSPIRE DT	Content	Metadata	IPR / Open Data
III.6. US	Sewage database	No	Open Data
I.8. HY	Dataset Hydrography (WMS)	ISO 19115	Open Data



UC-EP03-01 - Consulting the sewage database for the expansion and maintenance of the sewage system and wastewater treatment infrastructure



UC-EP03-02 - Joint management tool for the sewage database



UC-EP03-03 - Dissemination of information on sewage system to all stakeholders

EP04 - Cross-border Pilot in Czech R. / Slovakia

Scenario: CSspire - Everyday Life Issues Connected to Environmental Aspects

- UC-EP04-01: I want to cut a tree down on land which is under my ownership (outside of the forest)
- UC-EP04-02: I want to use water from underground sources in a quantity greater than 500 qm/day (build a well and draw water)
- UC-EP04-03: I am seeking a quiet and clean place to build a cottage



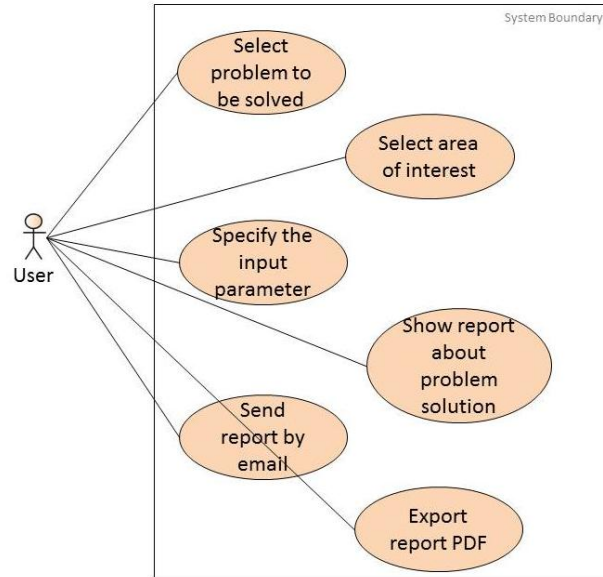
Datasets in CZ

INSPIRE DT	Content	Metadata	IPR / Open Data
I.6 CP	Cadastral parcels	ISO 19115	Open data
I.9 PS	Protected areas	ISO 19115	Open (WMS), Free under the specific agreement, data available for eENVplus use
I.9 PS	Important landscape elements	ISO 19115	idem
II.2 LC	CORINE	ISO 19115	Free for research and education, data available for eENVplus use
III.8 PF	ePRTR	ISO 19115	Open data

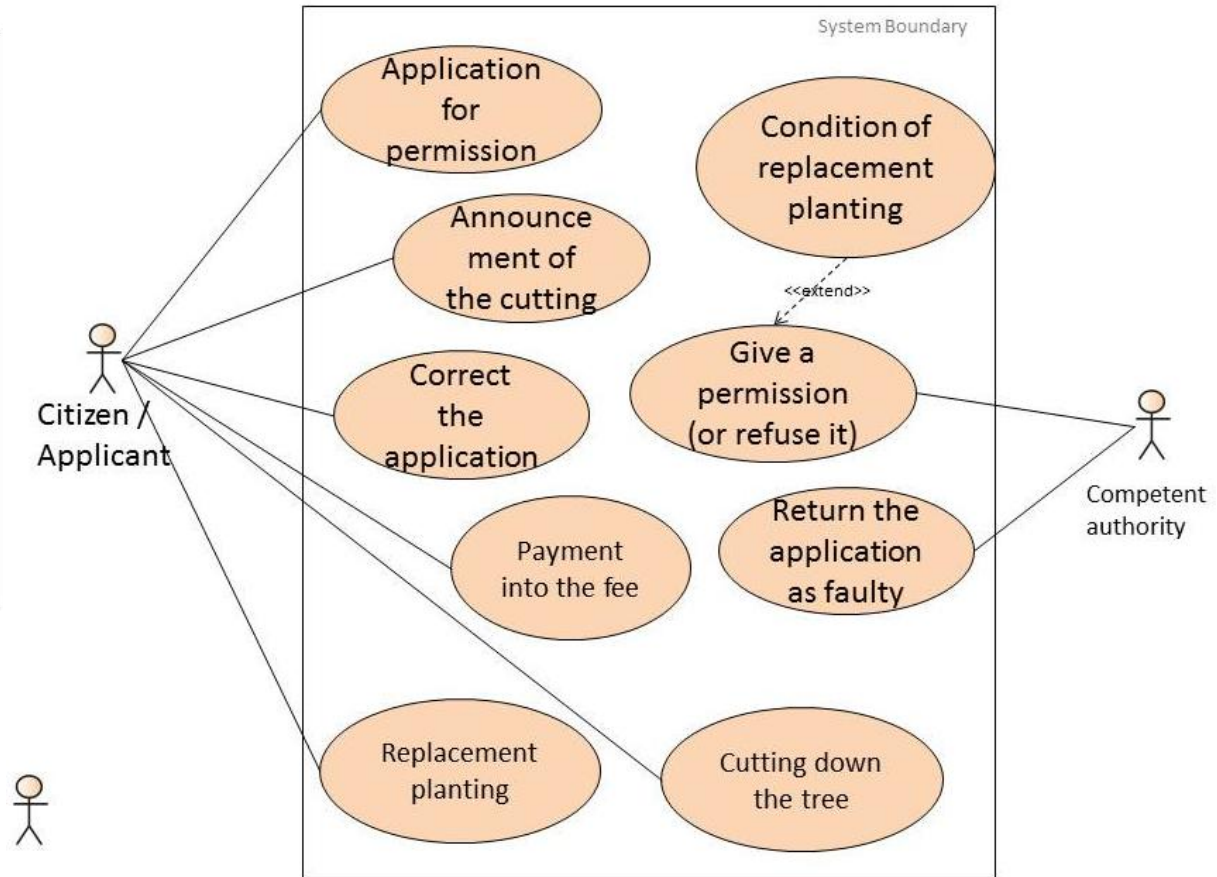
Datasets in SK

INSPIRE DT	Content	Metadata	IPR / Open Data
I.9 PS	Protected areas	ISO 19115	IPR data, (Free for research and education), data available for eENVplus use
I.9 PS	Important landscape elements	ISO 19115	idem
II.2 LC	CORINE	ISO 19115	Free for research and education, data available for eENVplus use
III.4 LU	Local plans	ISO 19115	IPR, data available for eENVplus use
III.6 US	Responsibility of the Office state and public administration	ISO 19115	Open data
III.8 PF	ePRTR	ISO 19115	IPR, data available for eENVplus use

Use Case - Georeport



General diagram - Georeport



UC-EP04-01 - I want to cut a tree down on land which is under my ownership (outside of the forest)

UC-EP04-02 - I want to use water from underground sources in a quantity greater than 500 m³/day (build a well and draw water)

UC-EP04-03 - I am seeking a quiet and clean place to build a cottage

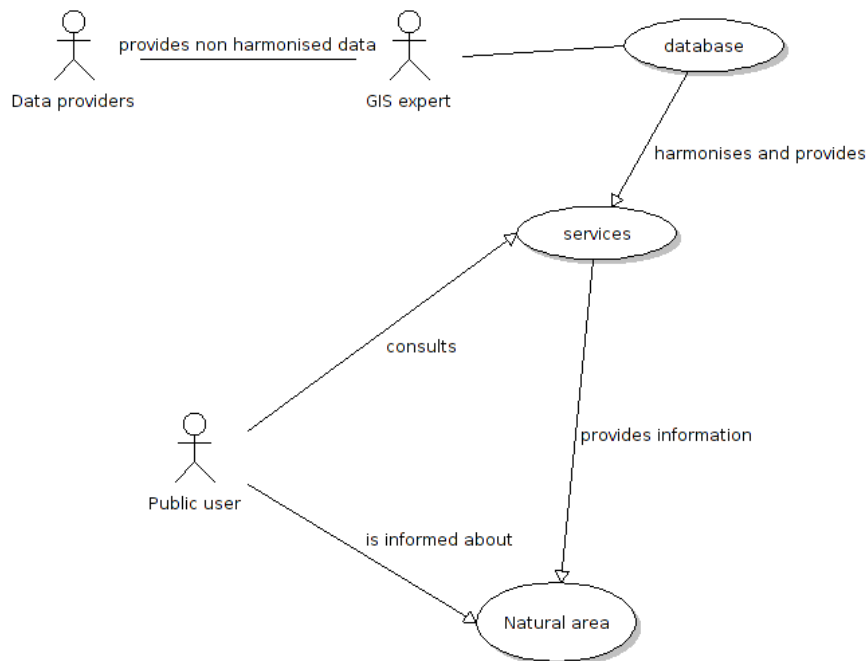
EP05 - Pilot in France: Scenario: Natural Areas INSPIRE Compliance Toolbox

- UC-EP05-01: Determine if the user is in or near a Protected site / a Biogeographical Region or an Habitat / Biotope zone
- UC-EP05-02: I've seen a species – Is there other around me?



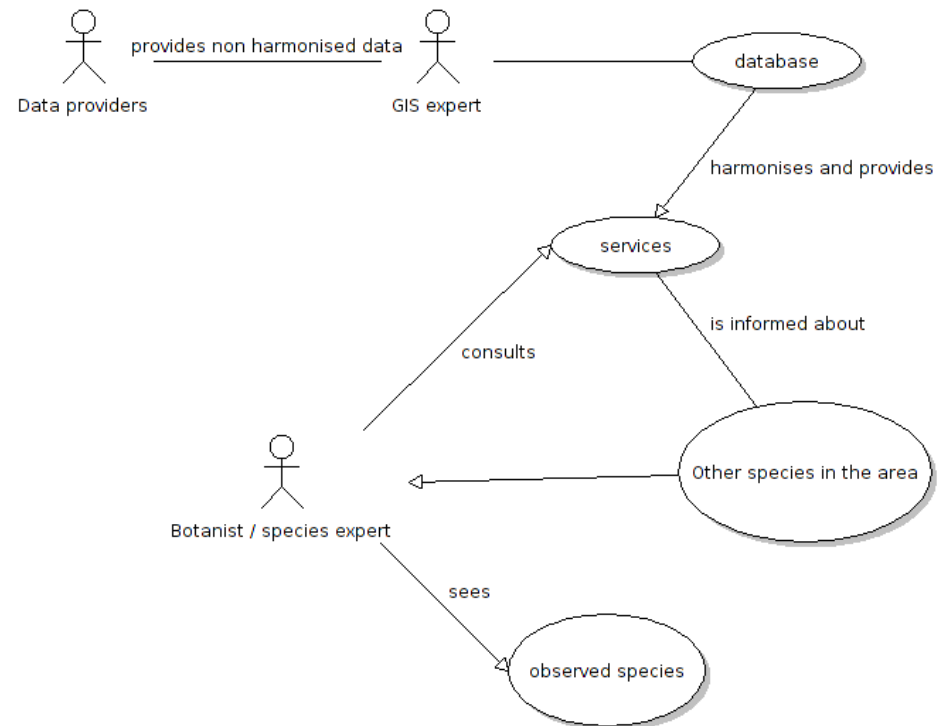
Datasets in FR			
INSPIRE DT	Content	Metadata	IPR / Open Data
I.9 PS	Parcs Nationaux Terrains des Conservatoires d'Espaces Naturels Réserves Naturelles Nationales	ISO19115 / INSPIRE	IPR protected but free access and use (*).
III.17 BR	Régions Biogéographiques	idem	idem
III.18 HB	Inventaire des Zones Naturelles d'Intérêts Ecologiques, Faunistiques et Floristiques Type 1 (ZNIEFF Type 1)	idem	idem

(*) The text « Muséum national d'Histoire naturelle » must be mentioned whenever the layer is used. The use of the data is allowed for the user's own internal business use, not for any commercial purpose, and not for financial profit or gain. No modification of the data is allowed.



UC-EP05-01 - Determine if the user is in or near a Protected site / a Biogeographical Region or a Habitat / Biotope zone

UC-EP05-02 - I've seen a species - Are there others around me?



EP06 - Pilot in Greece: Scenario: Forest Fire Management

- UC-EP06-01: Awareness Phase, data acquisition, pre-processing and preparation
- UC-EP06-02: Emergency Phase



Datasets in EL

INSPIRE DT	Content	Metadata	IPR / Open Data
II.2: LC	Fuel types classification, using the INSPIRE LC Data Specification (COVERAGE: -National)	ISO 19115	IPR, data available for eENVplus
III.7: EF	Weather conditions and their measurements; precipitation, temperature, evapotranspiration, wind speed and direction (COVERAGE: Regional)	No	IPR, data available for eENVplus
III.14: MF	idem	idem	idem

Note: Additionally, the following datasets are included as well:

Spatial-temporal processed data:

- Fire Linear Intensity, BYR (Kw/m) / WCS
- Cloud Coverage, CLO (%) / WCS
- Dead Fuel Moisture, DFM (%) / WCS
- Air Relative Humidity, HRE (%) / WCS
- Probability of Ignition, PIG (%) / WCS
- Rain precipitation in the last hr, PPH (mm) / WCS
- Accumulated Precipitation, PPD (mm) / WCS
- Temperature, TEM (Celsius) / WCS
- Wind Speed, WSP (m/sec, integer) / WCS
- Wind Direction, WDI (Degrees Clockwise) / WCS

Spatial-static processed data:

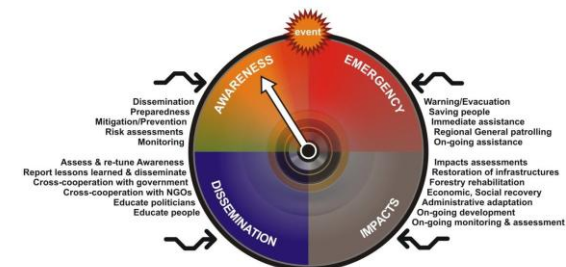
- Aspect, ASP (Degrees) / WCS
- Slope, SLO (Degrees) / WCS
- Fuel Models, FMO (List of models) / WCS

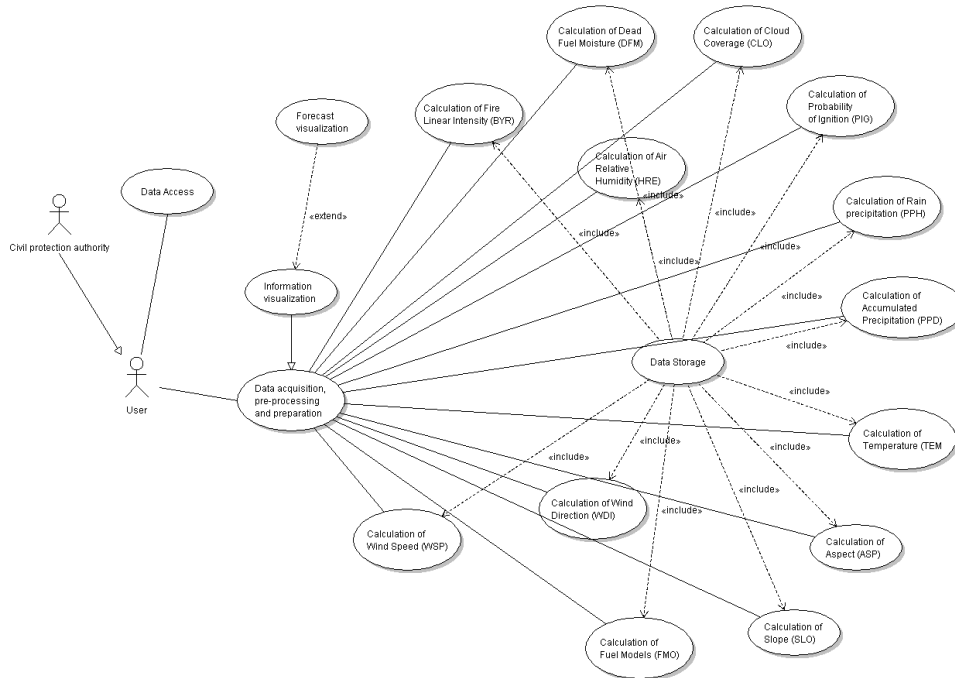
Background map

- CORINE Land Use / WCS
- OSM Road Network / WFS

Infrastructures

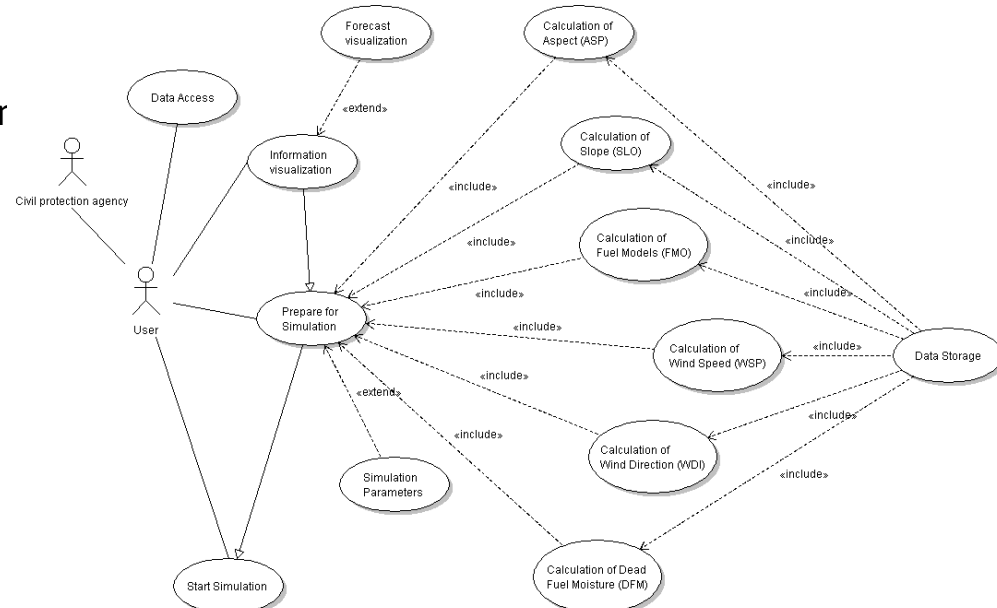
- Infrastructures related to forest fires / WFS
- Building blocks / WCS





UC-EP06-01 - Awareness Phase, data acquisition pre-processing and preparation

UC-EP06-02 - Emergency Phase



EP07 - Cross-border Pilot in Hungary / Slovakia

Scenario: Window on the Protected Areas - Mobile Conservation Map

- UC-EP07-01: Mobile Conservation Map (MCM) application

Datasets in SK (Area covered: Slovak Republic)

INSPIRE DT	Content	Metadata	IPR / Open Data
I.9. PA	Protected areas, important landscape elements	ISO 19115	IPR data (Free for research and education), data available for eENVplus use
I. 8. HY	Surface and ground water	ISO 19115	idem

Datasets in HU (Area covered: Hungary)

INSPIRE DT	Content	Metadata	IPR / Open Data
I. 8. HY	Lakes (surface over 10 km ²), River water body, River catchments (over 500 km ²), Water authority administrative boundaries	ISO 19115	Open data for eENVplus use
I.9. PA)	Protected sites IUCN, Natura 2000 sites, Ramsar sites, UNESCO Biosphere Reserves, UNESCO World Heritage Sites	ISO 19115	Open data for eENVplus use

EP08 - Pilot in Iceland: Scenario: INSPIRE Geoportal

- UC-EP08-01: Discover and Viewing, INSPIRE compliant services for nature conservation purpose

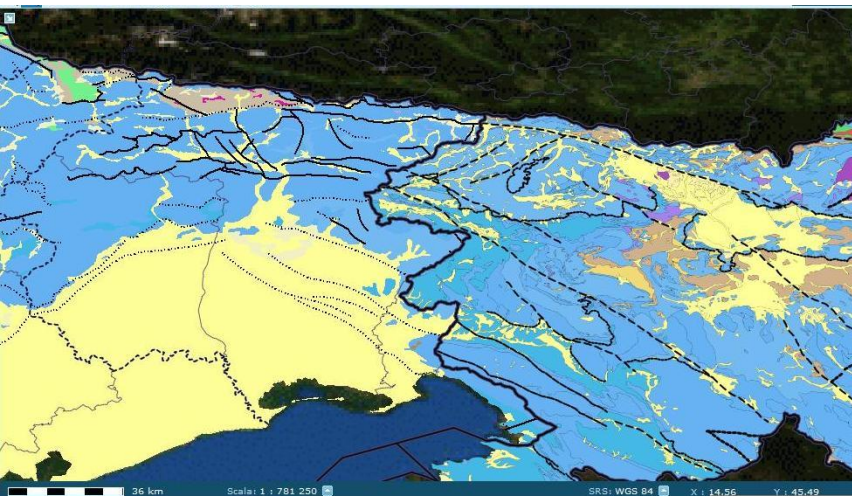
Datasets in IS (Area covered (103.000 km³): Whole Iceland)

INSPIRE DT	Content	Metadata	IPR / Open Data
I. 1. RS	Information of the Icelandic coordinate reference system (vertical and horizontal)	ISO 19115	Open data
I. 4. AU	Municipality boundaries (second level)	ISO 19115	Open data
I. 9. PS	Nature protected sites in Iceland (such as National Parks and reserved areas)	ISO 19115	Open data
I. 7. TN	Road database of Iceland (from the NLSI)	ISO 19115	Open data

Note: And Topographic map IS 50V (WMTS)

EP09 - Cross-border Pilot in Italy / Slovenia Scenario: Geological Map Harmonization

- UC-EP09-01: Environmental risk (geo-hazard): landslide susceptibility map
- UC-EP09-02: Environmental risk (geohazard): analysis of flooding phenomena
- UC-EP09-03: Environmental analysis: geological and environmental features of karst area

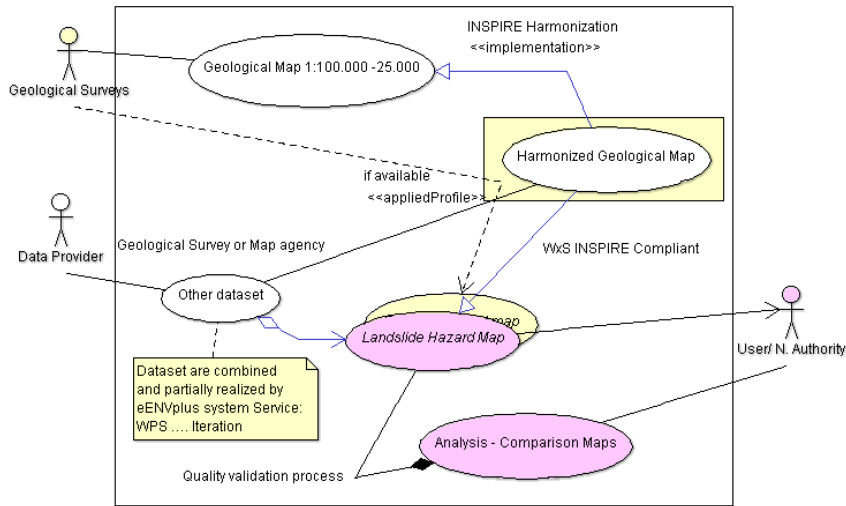


Datasets in IT

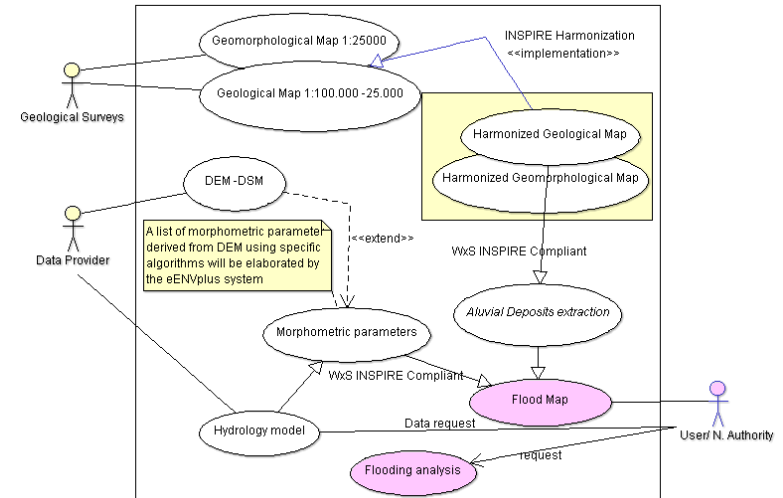
INSPIRE DT	Content	Metadata	IPR / Open Data
II.4. GE:	Geology 1M	ISO 19115	Open Data
II.4. GE:	Geolithology 100K	ISO 19115	No commercial use
II.4. GE:	Geology 25K	ISO 19115	No commercial use
II.4. GE:	IFFI Landslide	ISO 19115	No commercial use
II.4. GE:	Sinkholes	ISO 19115	No commercial use
II.4. GE:	ITHACA	ISO 19115	No commercial use
II.1. EL:	DEM	ISO 19115	No commercial use
I.7. TN:	Road and Railway network	ISO 19115	No commercial use
III.12. NZ	Landslide susceptibility map	No	No commercial use
III.12. NZ	EEE Catalogue	No	No commercial use

Datasets in SI

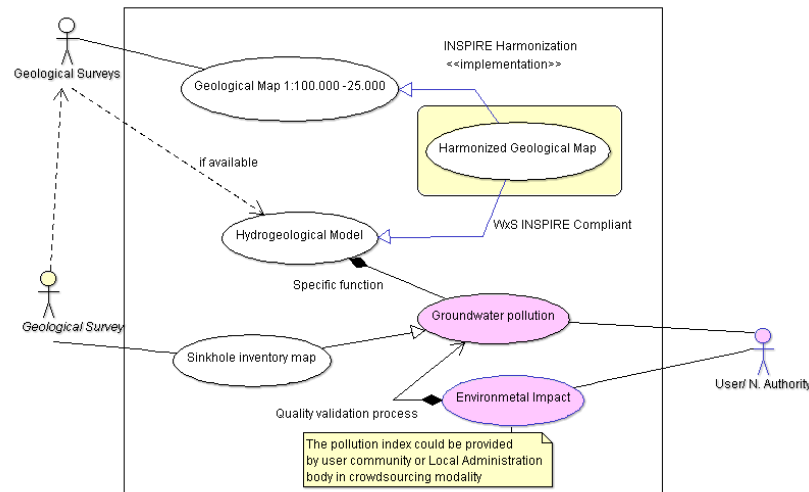
INSPIRE DT	Content	Metadata	IPR / Open Data
II.4. GE:	Geological and structural map	ISO 19115	Open Data
II.4. GE:	Basic geological map 1:100 000 sheet Beljak and Pontebba	ISO 19115	Copyright
II.4. GE:	Basic geological map 1:100 000 sheet Tolmin and Videm	ISO 19115	Copyright
II.4. GE:	Basic geological map 1:100 000 sheet Gorica	ISO 19115	Copyright
II.4. GE:	Basic geological map 1:100 000 sheet Trst	ISO 19115	Copyright
II.4. GE:	Geological map of Slovenia 1:250K	No	Copyright
II.4. GE:	Structural-tectonic map of Slovenia 1:250K	ISO 19115	Copyright
III.12. NZ:	Landslide susceptibility map of Slovenia 1:250K	ISO 19115	Copyright
III.12. NZ:	Debris-flow map of Slovenia 1:250K	No	Copyright
I.8. HY:	Hydrogeological map of Slovenia 1:250K	ISO 19115	Copyright



UC-EP09-01 - Environmental risk (geo-hazard):
landslide susceptibility map



UC-EP09-02 - Environmental risk (geohazard):
analysis of flooding phenomena



UC-EP09-03 - Environmental analysis: geological and environmental features of karst area

EP10 - Pilot in Portugal Scenario: Urban Landuse Planning

- UC-EP10-01: Delineation of study areas
- UC-EP10-02: Evaluate urban and rural growth
- UC-EP10-03: Evaluate and document data accuracy
- UC-EP10-04: Evaluate spatial planning impact on urban growth
- UC-EP10-05: Evaluate the impact of urban growth on air and water quality
- UC-EP10-06: Integrate statistical data (time series)



Datasets in PT (Area covered: Tomar, Abrantes and Loures)

INSPIRE DT	Content	Metadata	IPR / Open Data
I. 4. AU	Administrative units of the country: CAOP dataset	ISO 19115	Open data
II. 3. OI	Ortho imagery	ISO 19115	IPR, data available for eENVplus use
III. 1. SU	Official statistics related to housing and demography	ISO 19115	idem
III. 4. LU	COS90	ISO 19115	Open data
III. 4. LU	COS2007	ISO 19115	IPR, data available for eENVplus use

Thank you!

Olav Peeters

VMM (IRCEL - CELINE)

peeters@irceline.be