

Application scenarios

Olav Peeters
VMM (IRCEL - CELINE)

Open Technical Meeting, 18th September 2013

IS

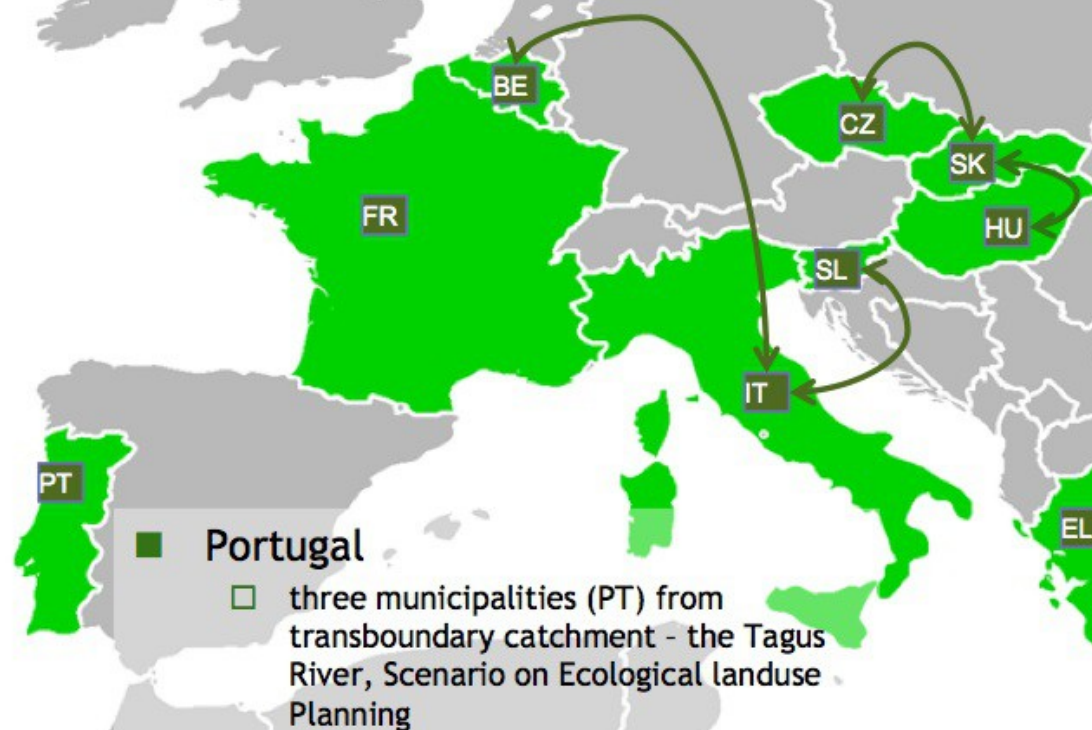
Scenarios & Pilots

■ 3 Cross-border Pilots:

- Czech Republic/Slovakia for everyday life issues connected to Environmental aspects
- Hungary/Slovakia for Nature Conservation
- Italy/Slovenia for Environmental Risk (Geohazard)

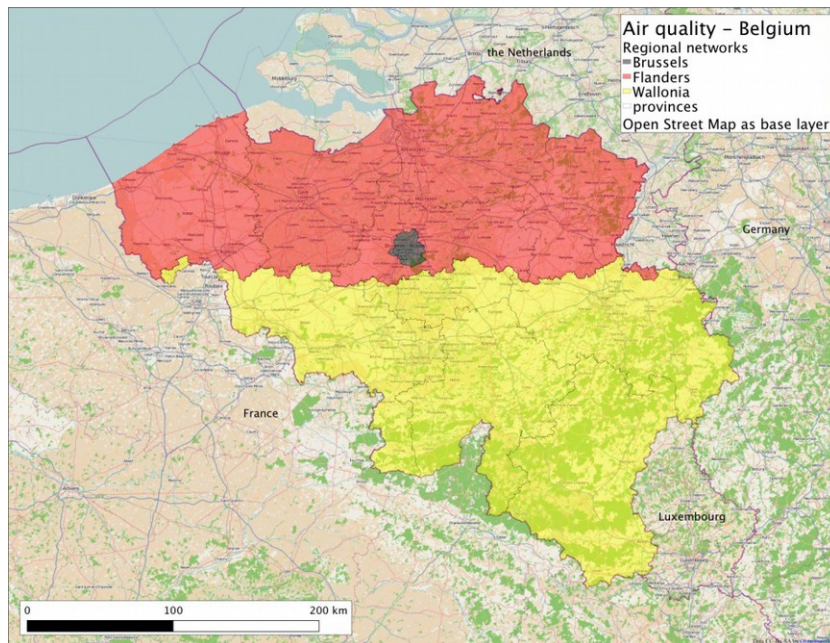
■ 1 Scenario in two Pilots

- Belgium and Italy for Air Quality



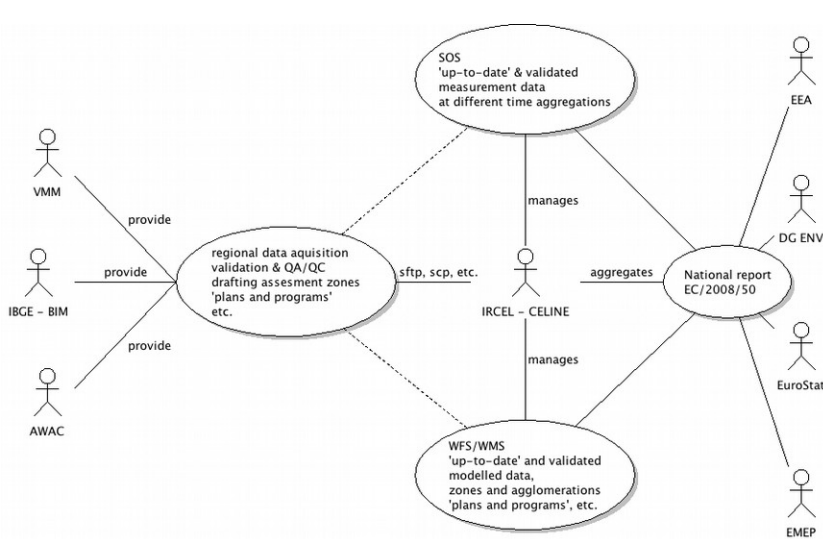
EP01 - Pilot in Belgium: Scenario: Implementation of a SEIS for air quality data

- UC-EP01-01: The reporting service
- UC-EP01-02: Validation and official submission
- UC-EP01-03: Providing useful open services derived from the same data

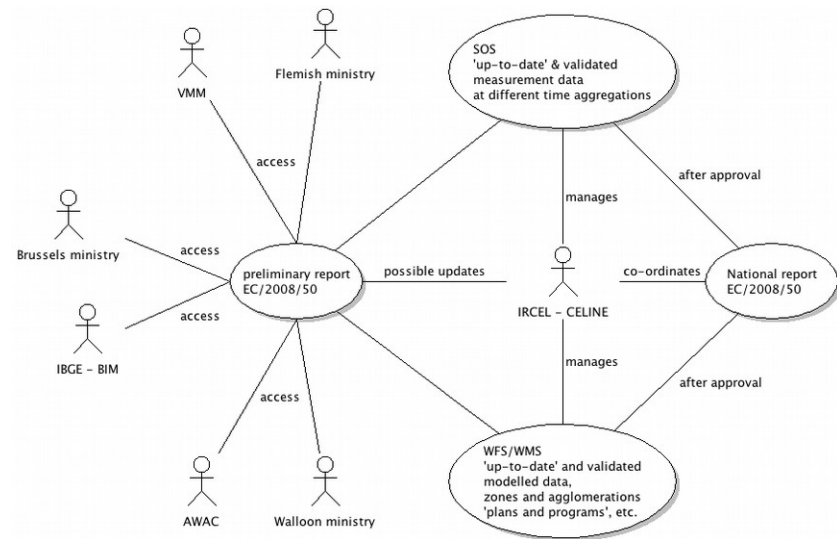


Datasets in BE

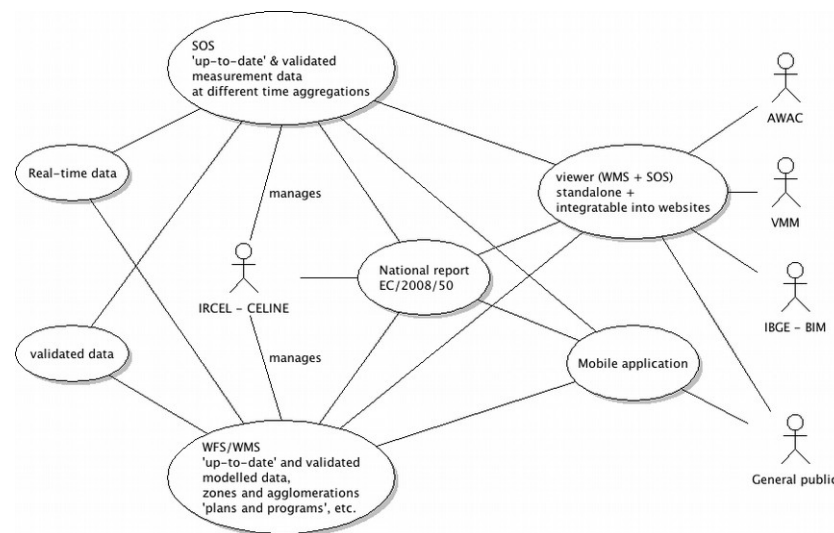
INSPIRE DT	Content	Metadata	IPR / Open Data
III.11.AM	Dataset B – "zones and agglomerations"	ISO 19115	Open data
III.11.AM	Dataset C – "assessment regime"	ISO 19115	Open data
III.11.AM	Dataset D – "assessment methods"	ISO 19115	Open data
III.7. EF	Dataset E1a – "primary validated assessment data – measurements"	ISO 19115	Open data
III.13 AC	Dataset E1b – "primary validated assessment data – modelled"	ISO 19115	Open data
III.7. EF	Dataset E2a – "primary up-to-date assessment data – measurements"	ISO 19115	Open data
III.13 AC	Dataset E2b – "primary up-to-date assessment data – modelled"	ISO 19115	Open data
III.7. EF	Dataset F1a – "aggregated data - primary validated measurements"	ISO 19115	Open data
III.13 AC	Dataset F1b – "aggregated data - primary validated modelled"	ISO 19115	Open data
III.7. EF	Dataset F2 – "aggregated data - primary up-to-date measurements"	ISO 19115	Open data
III.11.AM	Dataset G – "attainment of environmental objectives"	ISO 19115	Open data
III.11.AM	Dataset H – "air quality plans"	ISO 19115	Open data
III.11.AM	Dataset I – "source apportionment"	ISO 19115	Open data
III.11.AM	Dataset J – "scenario for the attainment year"	ISO 19115	Open data
III.11.AM	Dataset K – "measures"	ISO 19115	Open data



UC-EP01-01 - The reporting service



UC-EP01-02 - Validation and official submission



UC-EP01-03 - Providing useful open services derived from the same data

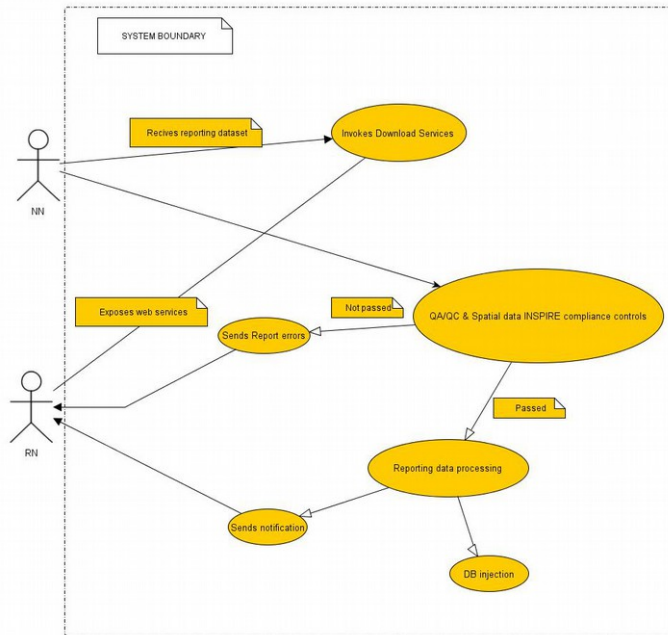
EP02 - Pilot in Italy: Scenario: Implementation of a SEIS for air quality data

- UC-EP02-01: National collection of reporting data
- UC-EP02-02: Official submission of National Reporting



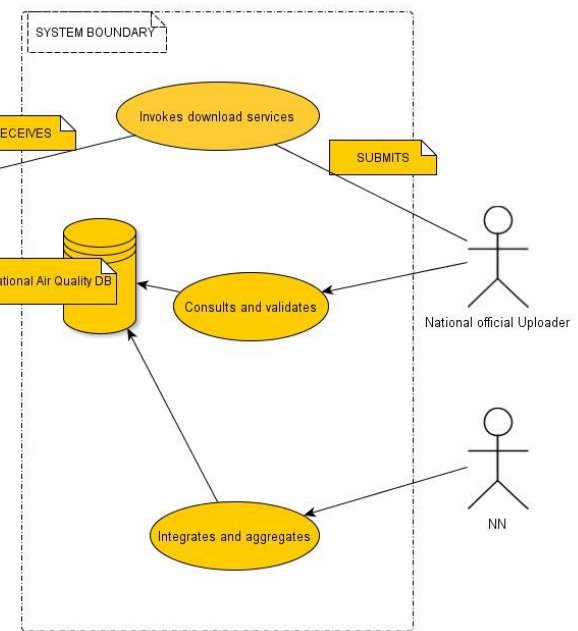
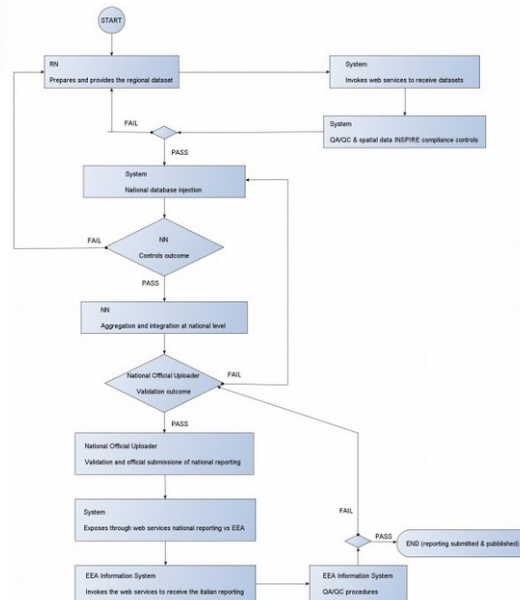
Datasets in IT

INSPIRE DT	Content	Metadata	IPR / Open Data
11. AM	Air Quality Zone and Agglomerations Information	ISO19115/INSPIRE	Free under specific agreement (IPR mention), data available for eENVPlus use



UC-EP02-01 - National collection of reporting data

Flowchart diagram



UC-EP02-02 - Official submission of National Reporting

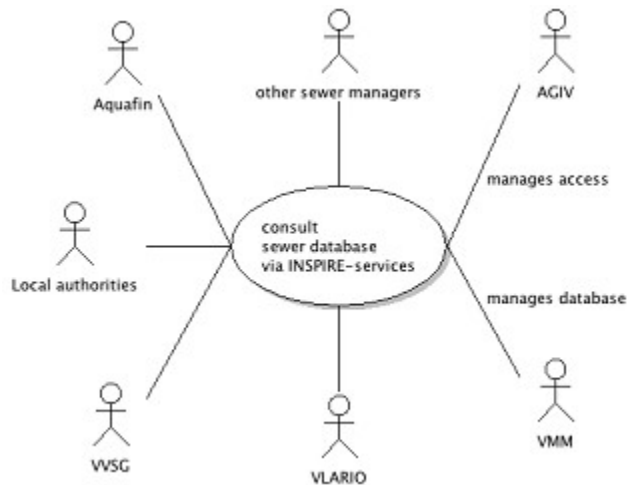
EP03 - Pilot in Belgium:

Scenario: Providing INSPIRE-compliant access to utility services: the case of sewage networks in Flanders

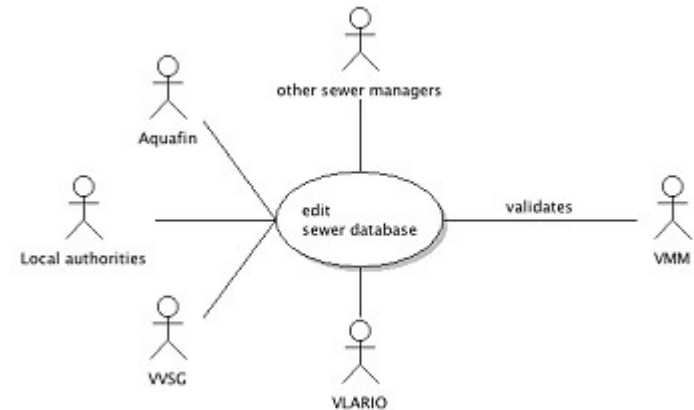
- UC-EP03-01: Consulting the sewage database for the expansion and maintenance of the sewage system and wastewater treatment infrastructure
- UC-EP03-02: Joint management tool for the sewage database
- UC-EP03-03: Dissemination of information on sewage system to all stakeholders

Datasets in BE

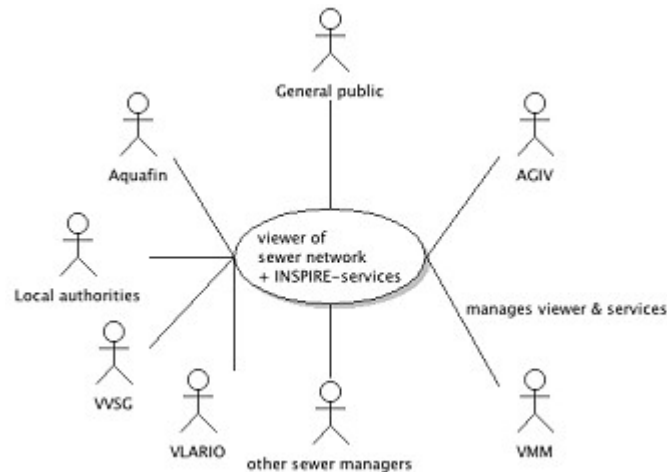
INSPIRE DT	Content	Metadata	IPR / Open Data
III.6. US	Sewage database	No	Open Data
I.8. HY	Dataset Hydrography (WMS)	ISO 19115	Open Data



UC-EP03-01 - Consulting the sewage database for the expansion and maintenance of the sewage system and wastewater treatment infrastructure



UC-EP03-02 - Joint management tool for the sewage database



UC-EP03-03 - Dissemination of information on sewage system to all stakeholders

EP04 - Cross-border Pilot in Czech R. / Slovakia

Scenario: CSspire - Everyday Life Issues Connected to Environmental Aspects

- UC-EP04-01: I want to cut a tree down on land which is under my ownership (outside of the forest)
- UC-EP04-02: I want to use water from underground sources in a quantity greater than 500 qm/day (build a well and draw water)
- UC-EP04-03: I am seeking a quiet and clean place to build a cottage



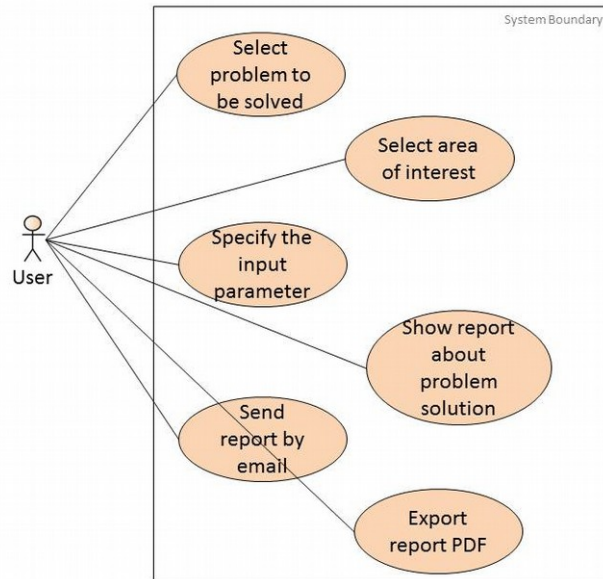
Datasets in CZ

INSPIRE DT	Content	Metadata	IPR / Open Data
I.6 CP	Cadastral parcels	ISO 19115	Open data
I.9 PS	Protected areas	ISO 19115	Open (WMS), Free under the specific agreement, data available for eENVplus use
I.9 PS	Important landscape elements	ISO 19115	idem
II.2 LC	CORINE	ISO 19115	Free for research and education, data available for eENVplus use
III.8 PF	ePRTR	ISO 19115	Open data

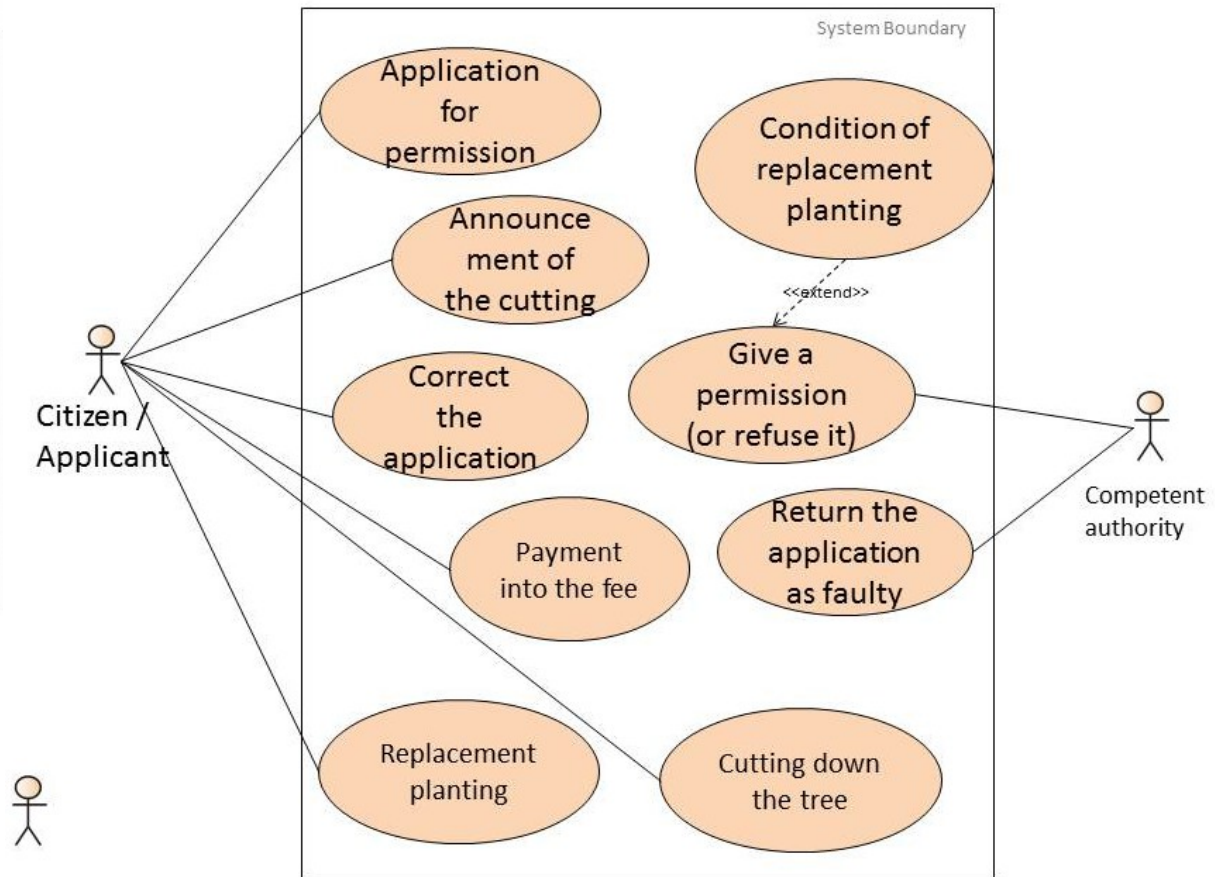
Datasets in SK

INSPIRE DT	Content	Metadata	IPR / Open Data
I.9 PS	Protected areas	ISO 19115	IPR data, (Free for research and education), data available for eENVplus use
I.9 PS	Important landscape elements	ISO 19115	idem
II.2 LC	CORINE	ISO 19115	Free for research and education, data available for eENVplus use
III.4 LU	Local plans	ISO 19115	IPR, data available for eENVplus use
III.6 US	Responsibility of the Office state and public administration	ISO 19115	Open data
III.8 PF	ePRTR	ISO 19115	IPR, data available for eENVplus use

Use Case - Georeport



General diagram - Georeport



UC-EP04-01 - I want to cut a tree down on land which is under my ownership (outside of the forest)

UC-EP04-02 - I want to use water from underground sources in a quantity greater than 500 m³/day (build a well and draw water)

UC-EP04-03 - I am seeking a quiet and clean place to build a cottage

EP05 - Pilot in France: Scenario: Natural Areas INSPIRE Compliance Toolbox

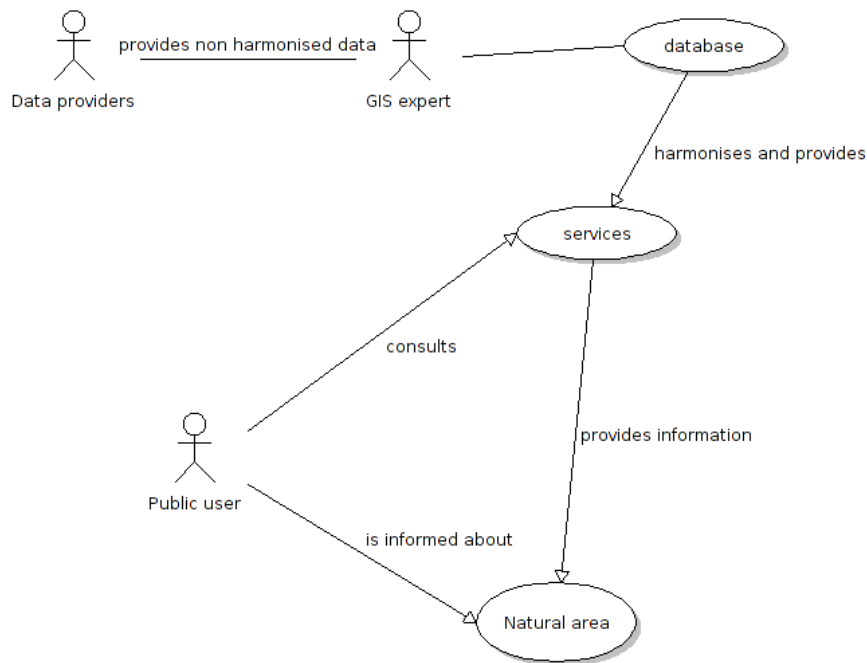
- UC-EP05-01: Determine if the user is in or near a Protected site / a Biogeographical Region or an Habitat / Biotope zone
- UC-EP05-02: I've seen a species – Is there other around me?



Datasets in FR

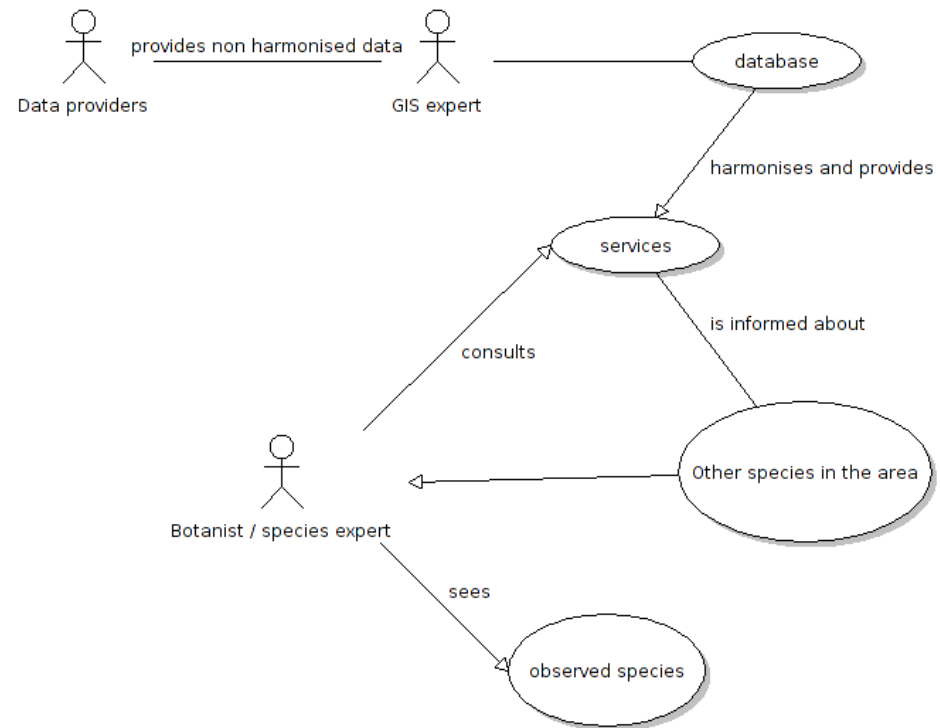
INSPIRE DT	Content	Metadata	IPR / Open Data
I.9 PS	Parcs Nationaux Terrains des Conservatoires d'Espaces Naturels Réserves Naturelles Nationales	ISO19115 / INSPIRE	IPR protected but free access and use (*).
III.17 BR	Régions Biogéographiques	idem	idem
III.18 HB	Inventaire des Zones Naturelles d'Intérêts Ecologiques, Faunistiques et Floristiques Type 1 (ZNIEFF Type 1)	idem	idem

(*) The text « Muséum national d'Histoire naturelle » must be mentioned whenever the layer is used. The use of the data is allowed for the user's own internal business use, not for any commercial purpose, and not for financial profit or gain. No modification of the data is allowed.



UC-EP05-01 - Determine if the user is in or near a Protected site / a Biogeographical Region or a Habitat / Biotope zone

UC-EP05-02 - I've seen a species - Are there others around me?



EP06 - Pilot in Greece: Scenario: Forest Fire Management

- UC-EP06-01: Awareness Phase, data acquisition, pre-processing and preparation
- UC-EP06-02: Emergency Phase



Datasets in EL

INSPIRE DT	Content	Metadata	IPR / Open Data
II.2: LC	Fuel types classification, using the INSPIRE LC Data Specification (COVERAGE: -National)	ISO 19115	IPR, data available for eENVplus
III.7: EF	Weather conditions and their measurements; precipitation, temperature, evapotranspiration, wind speed and direction (COVERAGE: Regional)	No	IPR, data available for eENVplus
III.14: MF	idem	idem	idem

Note: Additionally, the following datasets are included as well:
Spatial-temporal processed data:

- Fire Linear Intensity, BYR (Kw/m) / WCS
- Cloud Coverage, CLO (%) / WCS
- Dead Fuel Moisture, DFM (%) / WCS
- Air Relative Humidity, HRE (%) / WCS
- Probability of Ignition, PIG (%) / WCS
- Rain precipitation in the last hr, PPH (mm) / WCS
- Accumulated Precipitation, PPD (mm) / WCS
- Temperature, TEM (Celsius) / WCS
- Wind Speed, WSP (m/sec, integer) / WCS
- Wind Direction, WDI (Degrees Clockwise) / WCS

Spatial-static processed data:

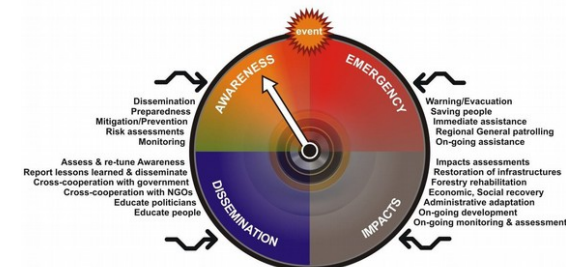
- Aspect, ASP (Degrees) / WCS
- Slope, SLO (Degrees) / WCS
- Fuel Models, FMO (List of models) / WCS

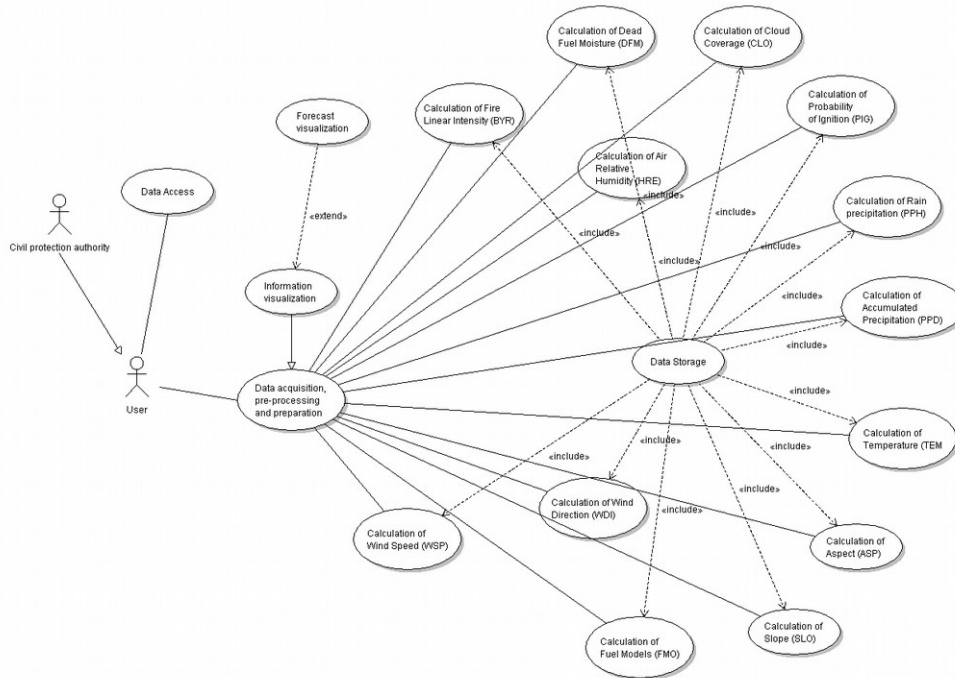
Background map

- CORINE Land Use / WCS
- OSM Road Network / WFS

Infrastructures

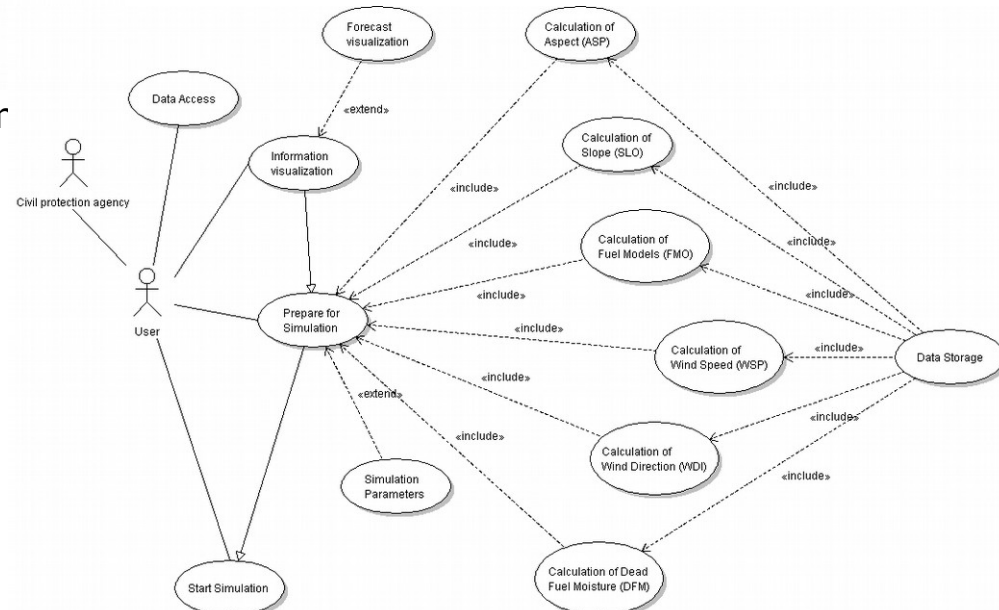
- Infrastructures related to forest fires / WFS
- Building blocks / WCS





UC-EP06-01 - Awareness Phase, data acquisition pre-processing and preparation

UC-EP06-02 - Emergency Phase



EP07 - Cross-border Pilot in Hungary / Slovakia

Scenario: Window on the Protected Areas - Mobile Conservation Map

- UC-EP07-01: Mobile Conservation Map (MCM) application

Datasets in SK (Area covered: Slovak Republic)

INSPIRE DT	Content	Metadata	IPR / Open Data
I.9. PA	Protected areas, important landscape elements	ISO 19115	IPR data (Free for research and education), data available for eENVplus use
I. 8. HY	Surface and ground water	ISO 19115	idem

Datasets in HU (Area covered: Hungary)

INSPIRE DT	Content	Metadata	IPR / Open Data
I. 8. HY	Lakes (surface over 10 km ²), River water body, River catchments (over 500 km ²), Water authority administrative boundaries	ISO 19115	Open data for eENVplus use
I.9. PA)	Protected sites IUCN, Natura 2000 sites, Ramsar sites, UNESCO Biosphere Reserves, UNESCO World Heritage Sites	ISO 19115	Open data for eENVplus use

EP08 - Pilot in Iceland:

Scenario: INSPIRE Geoportal - Nature Conservation data in Iceland

- UC-EP08-01: Discover and Viewing, INSPIRE compliant services for nature conservation purpose
- UC-EP08-02: Crowd sourcing on environmental objects in Iceland

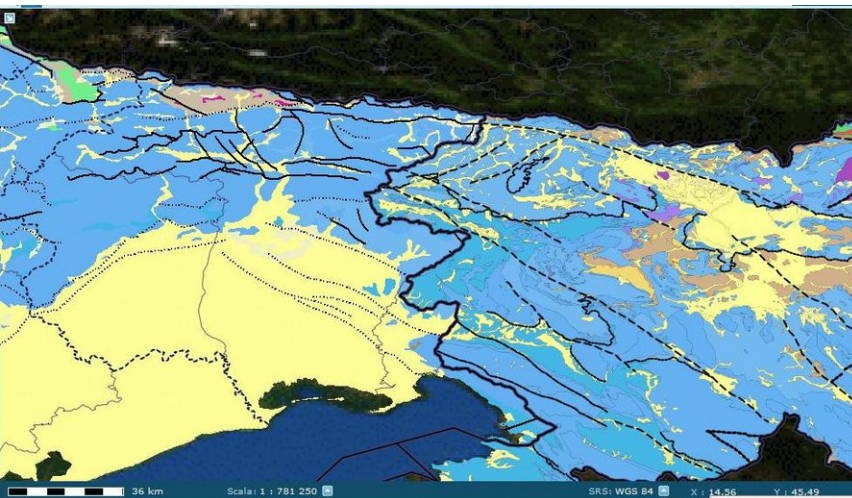
Datasets in IS (Area covered (103.000 km³): Whole Iceland)

INSPIRE DT	Content	Metadata	IPR / Open Data
I. 1. RS	Information of the Icelandic coordinate reference system (vertical and horizontal)	ISO 19115	Open data
I. 4. AU	Municipality boundaries (second level)	ISO 19115	Open data
I. 9. PS	Nature protected sites in Iceland (such as National Parks and reserved areas)	ISO 19115	Open data
I. 7.TN	Road database of Iceland (from the NLSI)	ISO 19115	Open data

Note: And Topographic map IS 50V (WMTS)

EP09 - Cross-border Pilot in Italy / Slovenia Scenario: Geological Map Harmonization

- UC-EP09-01: Environmental risk (geo-hazard): landslide susceptibility map
- UC-EP09-02: Environmental risk (geohazard): analysis of flooding phenomena
- UC-EP09-03: Environmental analysis: geological and environmental features of karst area

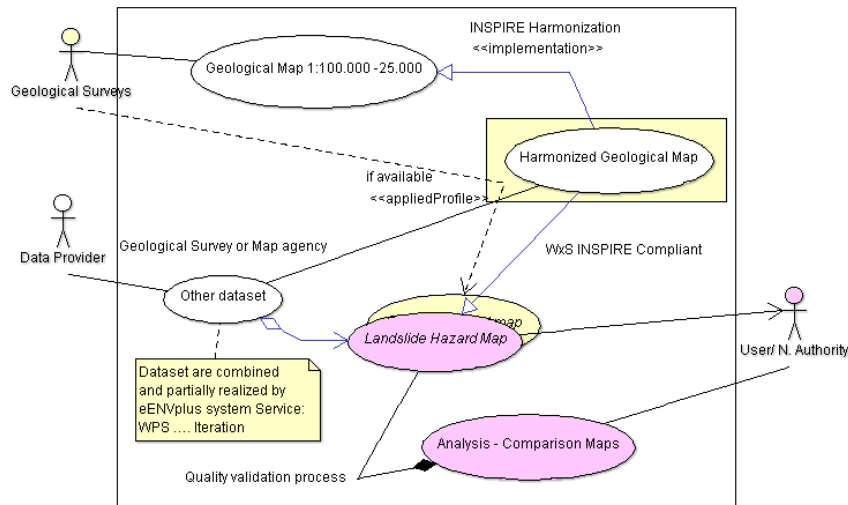


Datasets in IT

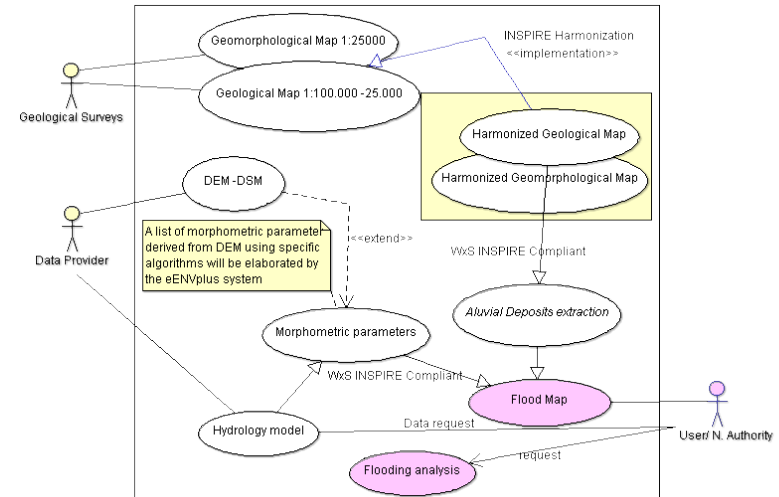
INSPIRE DT	Content	Metadata	IPR / Open Data
II.4. GE:	Geology 1M	ISO 19115	Open Data
II.4. GE:	Geolithology 100K	ISO 19115	No commercial use
II.4. GE:	Geology 25K	ISO 19115	No commercial use
II.4. GE:	IFFI Landslide	ISO 19115	No commercial use
II.4. GE:	Sinkholes	ISO 19115	No commercial use
II.4. GE:	ITHACA	ISO 19115	No commercial use
II.1. EL:	DEM	ISO 19115	No commercial use
I.7. TN:	Road and Railway network	ISO 19115	No commercial use
III.12. NZ	Landslide susceptibility map	No	No commercial use
III.12. NZ	EEE Catalogue	No	No commercial use

Datasets in SI

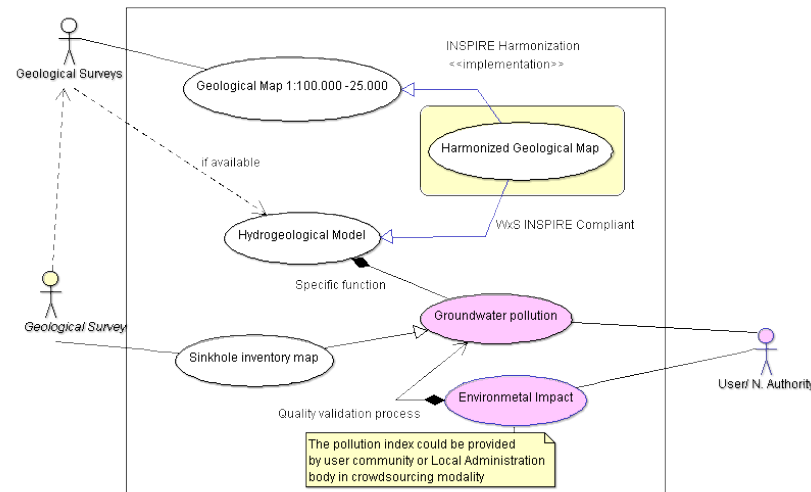
INSPIRE DT	Content	Metadata	IPR / Open Data
II.4. GE:	Geological and structural map	ISO 19115	Open Data
II.4. GE:	Basic geological map 1:100 000 sheet Beljak and Pontebba	ISO 19115	Copyright
II.4. GE:	Basic geological map 1:100 000 sheet Tolmin and Videm	ISO 19115	Copyright
II.4. GE:	Basic geological map 1:100 000 sheet Gorica	ISO 19115	Copyright
II.4. GE:	Basic geological map 1:100 000 sheet Trst	ISO 19115	Copyright
II.4. GE:	Geological map of Slovenia 1:250K	No	Copyright
II.4. GE:	Structural-tectonic map of Slovenia 1:250K	ISO 19115	Copyright
III.12. NZ:	Landslide susceptibility map of Slovenia 1:250K	ISO 19115	Copyright
III.12. NZ:	Debris-flow map of Slovenia 1:250K	No	Copyright
I.8. HY:	Hydrogeological map of Slovenia 1:250K	ISO 19115	Copyright



UC-EP09-01 - Environmental risk (geo-hazard):
landslide susceptibility map



UC-EP09-02 - Environmental risk (geohazard):
analysis of flooding phenomena



UC-EP09-03 - Environmental analysis: geological and environmental features of karst area

EP10 - Pilot in Portugal Scenario: Urban Landuse Planning

- UC-EP10-01: Delineation of study areas
- UC-EP10-02: Evaluate urban and rural growth
- UC-EP10-03: Evaluate and document data accuracy
- UC-EP10-04: Evaluate spatial planning impact on urban growth
- UC-EP10-05: Evaluate the impact of urban growth



Datasets in PT (Area covered: Tomar, Abrantes and Loures)

INSPIRE DT	Content	Metadata	IPR / Open Data
I. 4. AU	Administrative units of the country: CAOP dataset	ISO 19115	Open data
II. 3. OI	Ortho imagery	ISO 19115	IPR, data available for eENVplus use
III. 1. SU	Official statistics related to housing and demography	ISO 19115	idem
III. 4. LU	COS90	ISO 19115	Open data
III. 4. LU	COS2007	ISO 19115	IPR, data available for eENVplus use

IS

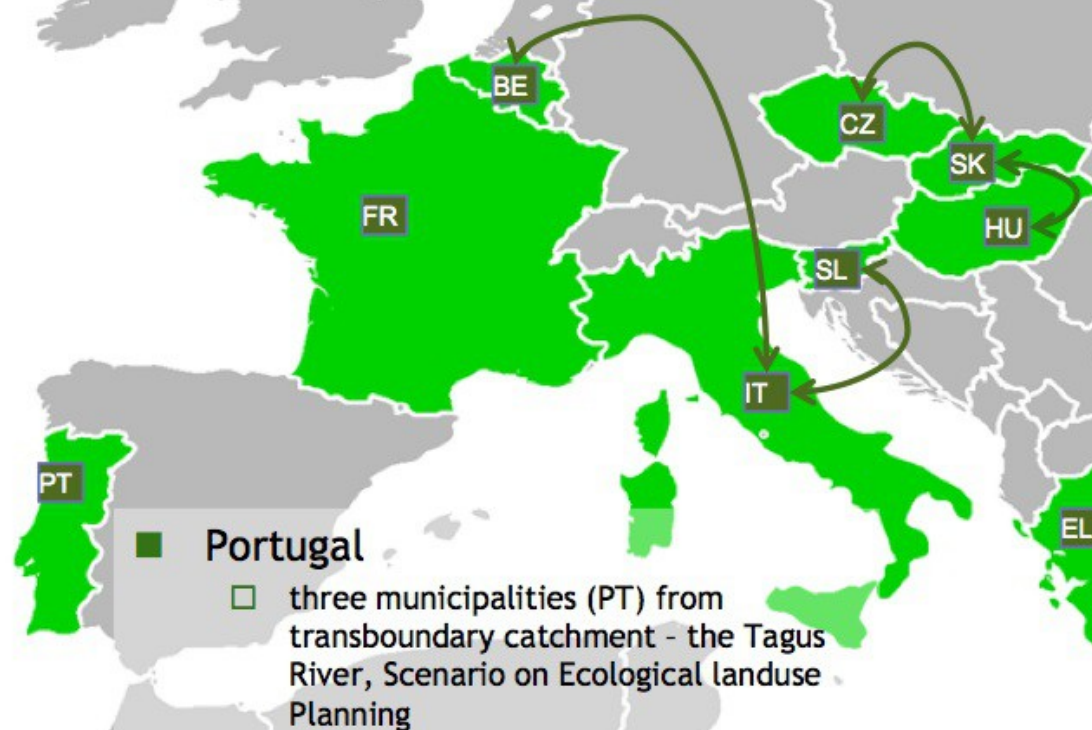
Scenarios & Pilots

3 Cross-border Pilots:

- ☐ Czech Republic/Slovakia for everyday life issues connected to Environmental aspects
- ☐ Hungary/Slovakia for Nature Conservation
- ☐ Italy/Slovenia for Environmental Risk (Geohazard)

1 Scenario in two Pilots

- ☐ Belgium and Italy for Air Quality



Portugal

- ☐ three municipalities (PT) from transboundary catchment - the Tagus River, Scenario on Ecological landuse Planning

eENVplus use case definition and user requirements collection

- 26 use cases were defined for each of the Pilot Applications
- A Technical Team was established to analyse the provided use cases and extract user and system requirements.
- These requirements (ca. 190) are the basis for the specifications of the eENVplus software products.
- A collaborative software environment (bug tracker and project management tool) has supported the requirements collection phase.
- A strong communication effort between all partners has been of great importance.

Step 1

- collection

Use Case descriptions

10 Pilot Applications

26 Use Cases

EP01 - Pilot in Belgium:
Scenario: Implementation of a SEIS for air quality data

- UC-EP01-01: The reporting service
- UC-EP01-02: Validation and official submission
- UC-EP01-03: Providing useful open services derived from the same data

EP02 - Pilot in Italy:
Scenario: Implementation of a SEIS for air quality data

- UC-EP02-01: National collection of reporting data
- UC-EP02-02: Official submission of National Reporting

EP03 - Pilot in Belgium:
Scenario: Providing INSPIRE-compliant access to utility services: the case of sewage networks in Flanders

- UC-EP03-01: Consulting the sewage database for the expansion and maintenance of the sewage system and wastewater treatment infrastructure
- UC-EP03-02: Joint management tool for the sewage database
- UC-EP03-03: Dissemination of information on sewage system to all stakeholders

EP04 - Cross-border Pilot in Czech R. / Slovakia
Scenario: CSspire - Everyday Life Issues Connected to Environmental Aspects

- UC-EP04-01: I want to cut a tree down on land which is under my ownership (outside of the forest)
- UC-EP04-02: I want to use water from underground sources in a quantity greater than 500 qm/day (build a well and draw water)
- UC-EP04-03: I am seeking a quiet and clean place to build a cottage

EP05 - Pilot in France:
Scenario: Natural Areas INSPIRE Compliance Toolbox

- UC-EP05-01: Determine if the user is in or near a Protected site / a Biogeographical Region or an Habitat / Biotope zone
- UC-EP05-02: I've seen a species – Is there other around me?

EP06 - Pilot in Greece:
Scenario: Forest Fire Management

- UC-EP06-01: Awareness Phase, data acquisition, pre-processing and preparation
- UC-EP06-02: Emergency Phase

EP07 - Cross-border Pilot in Hungary / Slovakia
Scenario: Window on the Protected Areas - Mobile Conservation Map

- UC-EP07-01: Mobile Conservation Map (MCM) application

EP08 - Pilot in Iceland:
Scenario: INSPIRE Geoportal

- UC-EP08-01: Discover and Viewing, INSPIRE compliant services for nature conservation purpose
- UC-EP08-02: Crowd sourcing on environmental objects in Iceland

EP09 - Cross-border Pilot in Italy / Slovenia
Scenario: Geological Map Harmonization

- UC-EP09-01: Environmental risk (geo-hazard): landslide susceptibility map
- UC-EP09-02: Environmental risk (geohazard): analysis of flooding phenomena
- UC-EP09-03: Environmental analysis: geological and environmental features of karst area

EP10 - Pilot in Portugal
Scenario: Urban Landuse Planning

- UC-EP10-01: Access to data and definition of study areas
- UC-EP10-02: Evaluate urban and rural growth
- UC-EP10-03: Evaluate and document data accuracy
- UC-EP10-04: Evaluate spatial planning impact on urban growth
- UC-EP10-05: Evaluate the impact of urban growth

Pilots

Functionalities

Pilot Number	Scenario Title	Pilot Responsible	Technical Responsible (Proposal)	Data Themes	Harmonisation Toolkit	Validation Toolkit	eMValus Catalogue and connection	Mobile App	Services															Other Functional requirements	User Requirements (Issue)																																								
									Thesaurus Exploitation Services			Data Access Services					Web Processing Service (WPS)	Orchestration Service	Reporting Service	Crowdsourcing Service	Validation Service	Ingestion Service and Work Flow	Advanced (3DAR) Visualization Support Service		Nonfunctional (Issue Category)																																								
									TF for Metadata Compilation	TF for Data Discovery	TF for Semantic Explorative Search	Web Map Service (WMS)	Web Feature Service (WFS)	Web Coverage Service (WCS)	Catalogue Service for Web (CSW)	Sensor Observation Service (SOS)									User Interface	Usability	Performance	Operational	Security	Legal																																			
EP01	Implementation of a SEIS for air quality data	Olav Peeters (VMM-IRCELIN)	Olav Peeters (VMM-IRCELIN), Carmelo Altamira (GISIG), EPSIT	III.11. AM, III.7. EF, III.13. AC	EP01-01	EP01-02	EP01-03	EP01-03	EP01-03	EP01-03	All	All			All		EP01-01 EP01-02	All	All	EP01-03	EP01-03 (n)	EP01-02 EP01-03		EP01-03	EP01-02	EP01-03																																							
EP02	Implementation of a SEIS for air quality data	Giannini Luciana (ISPRA)	Giannini Luciana (ISPRA), Carmelo Altamira (GISIG), EPSIT	11. AM	All	All			EP02-01		All	All			All	EP02-01 EP02-02	All		All	All	EP2-02 (2)	see redmin. & require ments																																											
EP03	Providing INSPIRE-compliant access to utility services: the case of sewage networks in Flanders	Katleen Miserez (VMM) Kristof Dazconze (VMM)	Katleen Miserez (VMM), Roderic Molina (GISIG)	I.8. HY, III.6. US	All (n)	All (n)	All				All	All					EP03-03	All	All		see redmine requirements			All	All																																								
EP04	Csspire - Everyday Life Issues Connected to Environmental Aspects	Jarmila Cikanikova (CENIA), Marek Ziack (SAZP), Veronika Koskova (SAZP)	Marketa Hanzlova (GISIG)	I.6 CP, I.8 HY, I.9 PS II.2 LC, III.5 HH, III.8 PF, III.4 LU (SK), III.6 US (SK), III.17-19 (SK)	All	All	Maybe				All	All			All	EP04-01 EP04-02 EP04-03		All		All (n)				All																																									
EP05	Natural Areas INSPIRE Compliance Toolbox	Sophie Gras (ATEN)	Stefano Piffer (Graphitech), Marketa Hanzlova (GISIG)	I.9 PS, III.17 BR, III.17 HB, III.19 SD	NO	NO	All		NO	NO	NO	NO	NO	NO			EP05-03		NO		NO	All		EP05-02	All																																								
EP06	Forest Fire Management	Marc Bonazountas, Alexis Asfyakopoulos (EPSILON)	Giacomo Martinaro (EPSIT)	II.2 LC, III.7. EF, III.14: MF	EP06-02	X				All		All	All			All	All		EP06-01(n) EP06-02		All																																												
EP07	Window on the Protected Areas - Mobile Conservation Map	Attila Andras Takacs (MRD), Bela Markus (GEO), Marek Ziack, Veronika Koskova, Martin Koska (SAZP)	Stefano Piffer (Graphitech)	I.9. PA, I. 8. HY	EP07-01	EP07-01	EP07-01		EP07-01		EP07-02	EP07-01	EP07-00	EP07-01		EP07-01			EP07-01		EP07-01	EP07-01	EP07-01		EP07-01	EP07-01																																							
EP08	INSPIRE Geoportal - Nature conservation data in Iceland	Eydís Lindal Finnbgadóttir (NLIS)	Jens Stutta (PKH), Dimitrios Karachalios (PKH)	I.1 RS, I.4 AU, I.9 PS I.7. TN	EP08-01	EP08-01	EP08-01 (n)		EP08-01	EP08-01	EP08-01	EP08-01		EP08-01 (n)						EP08-01 (n)				EP08-01																																									
EP09	Geological Map Harmonization	Marco Pantalon (ISPRA), Mateusz Novak (GeoZS)	Carlo Capolioni (ISPRA), Stefano Pazzi (SPINRIGIS), Stefano Piffer (Graphitech)	II.4 GE, II.1. EL (IT), I.7. TN (IT), III.12. NZ I.8. HY (SI)	All	All	All		All		All	All		All	EP09-03	All EP09-01 EP09-02 EP09-03	All	EP09-01 EP09-02	EP09-01 EP09-02	EP09-01 EP09-02	EP09-01 EP09-02	All	All	All	All																																								
EP10	Urban Landuse Planning: INSPIRE/land use planning Indicators to monitor good urban planning practices	Rui Reis, Maria Vale (DGT), Raquel Saraiva (DGT)	Rui Reis & Maria Vale (DGT), Roderic Molina (GISIG)	I.4. AU, II. 3. OI, III. SU, III. 4. LU	All	All			All		All	All			All EP010- (01, 02, 03, 04, 05)	All EP010- (01, 02, 03, 04, 05)			All (n)		All	All																																											
Responsibilities (Assignment)					WP1, Giacomo Martinaro (EPSIT) + SNERGIS	TS.7 Jens Stutta + XXX (PKH)			Stefano Piffer (GRAPHITECH)			WP4, Monica DiMartino (ONR-MAT), Carsten Hüdman (day)			TS.3, Stefano Piffer (GRAPHITECH)			TS.3, Stefano Piffer (GRAPHITECH)			TS.3, Stefano Piffer (GRAPHITECH)			TS.3, Stefano Piffer (GRAPHITECH)			TS.4, Stefano Pazzi (SNERGIS)			TS.4, Carsten Hüdman (day) Stefano Pazzi (SNERGIS)			TS.5 (GISIG, VMM, ISPRA)			TS.6, Stefano Piffer (GRAPHITECH)			TS.3, Giacomo Martinaro (EPSIT)			TS.3, Stefano Pazzi (SNERGIS)			WP5, WP6, Stefano Piffer (GRAPHITECH)			Technical Responsible			Technical Responsible			Technical Responsible			Technical Responsible			Stefano Pazzi (SNERGIS)			Technical Responsible		

- Project management via a tracking system

Home My page Projects Administration Help

Logged in as radmin My account Sign out

eENVplus

Overview Activity Roadmap Issues New issue Gantt Calendar News Documents Wiki Files Arch Decisions Settings

Requirements #103

Update Log time Unwatch Copy Delete

WPS service for relevant data identification and retrieval

Added by Luca Giovannini 9 days ago. Updated about 2 hours ago.

Status:	New	Start date:	June 12, 2013
Priority:	Normal	Due date:	
Assignee:	Stefano Pezzi	% Done:	0%
Category:	Functional Requirement	Spent time:	-
Target version:	Version 1	Pilot:	EP10 (PT)
Scenario:	Urban Landuse Planning: INSPIRE'd land use planning Indicators to monitor good urban planning practices		
Services (If Functional Req.):	Web Processing Service (WPS)	Validated TR:	Yes
Non-functional Requirements:		Validated SR:	No
Use Case ID:	UC-EP10-01	Validated PR:	No

Description

eENVplus system shall provide a WPS service to identify and retrieve the data relevant to the user-provided area of interest among the available statistical datasets on urban planning and growth urban planning.

If what we want is to select an AoI we don't need a WPS.

Related Arch Decisions

Subtasks

Related issues

Related to Requirements #81: Definition of the area of interest

History

Updated by Stefano Pezzi 8 days ago

- Subject changed from WPS service for relevant data identification and retrieval to WPS service for relevant data identification and retrieval

Updated by Stefano Pezzi 8 days ago

- Description updated (diff)

Updated by Roderic Molina about 2 hours ago

- Description updated (diff)
- Scenario changed from Urban Landuse Planning to Urban Landuse Planning: INSPIRE'd land use planning Indicators to monitor good urban planning practices
- Validated TR set to Yes
- Validated SR set to No
- Validated PR set to No

Update Log time Unwatch Copy Delete

Also available in: Atom | PDF

Issues

View all issues
Summary
Calendar
Gantt

Watchers (5)

Luca Giovannini
Maria Vale
Roderic Molina
Rui Reis
Stefano Pezzi

... ca. 190 requirements where defined

eENVplus user & system requirements are tracked in a shared system, stimulating & structuring communication between partners

Redmine (<http://www.redmine.org/>) project management and bug-tracking tool
GNU General Public License v2 (GPL)

Example of requirements:

✓ # ▲	Subject	Use Case ID	Assignee
<input type="checkbox"/> 15	Metadata Compilation for time-aggregated datasets	UC-EP01-01 UC-EP01-02	
<input type="checkbox"/> 16	Service Discovery	UC-EP01-03	
<input type="checkbox"/> 17	Semantic Explorative Search	UC-EP01-03	
<input type="checkbox"/> 35	WMS support for web-based mapping client	UC-EP01-01 UC-EP01-02 UC-EP01-03	Stefano Piffer
<input type="checkbox"/> 36	WFS support for web-based mapping client	UC-EP01-01 UC-EP01-02 UC-EP01-03	Stefano Piffer
<input type="checkbox"/> 54	Mobile app for Air quality dataset	UC-EP01-03	Stefano Piffer
<input type="checkbox"/> 58	Advanced Visualization in Web Client	UC-EP01-03	Stefano Piffer
<input type="checkbox"/> 60	SOS support for browser-based mapping client	UC-EP01-01 UC-EP01-02 UC-EP01-03	Stefano Piffer
<input type="checkbox"/> 90	Integrate Download Service into INSPIRE infrastructure	UC-EP01-03	
<input type="checkbox"/> 91	Integrate View Service into INSPIRE infrastructure	UC-EP01-03	
<input type="checkbox"/> 109	Ingestion Service for air quality data	UC-EP01-01, UC-EP01-02, UC-EP01-03	Stefano Pezzi
<input type="checkbox"/> 140	Validation Service for air quality data	UC-EP01-01	Giacomo Martirano
<input type="checkbox"/> 141	Transformation service for air quality data	UC-EP01-01	

Thank you!

Olav Peeters
VMM (IRCEL - CELINE)
peeters@irceline.be